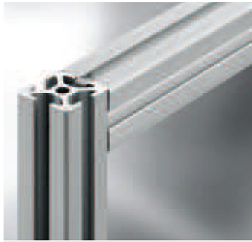


## Profiles and accessories

### Products in this section



**Profiles 5 – modular dimension of 20 mm**

- Extremely compact dimensions
- For refined, stable and flexible applications

17



**Profiles 5 – flat cross-sections**

- Particularly flat profiles
- Full functionality at a height of just 8.5 to 14 mm

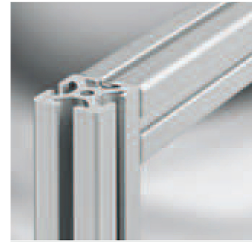
19



**Profiles 5 R**

- Closed on two sides, rounded surface
- Available in various angles

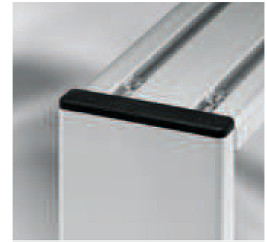
20



**Profiles 6 – modular dimension of 30 mm**

- The weight-optimised profile line
- Ideal for slimline, robust design

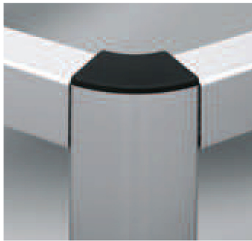
21



**Profiles 6 – flat cross-sections**

- Low installation height
- For fastening lightweight components

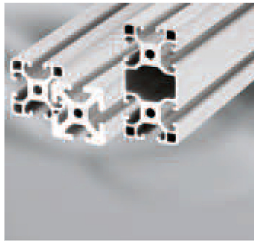
24



**Profiles 6 R**

- Ideal for building protective hoods, frames and tables
- Closed on two sides, rounded surface
- Available in various angles

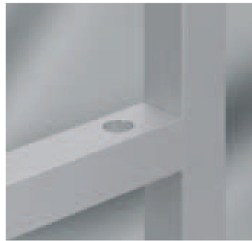
26



**Profiles 8 – modular dimension of 40 mm**

- The universal and robust all-rounder
- Three variants for constructions with optimised load-carrying capacity

27



**Profiles 8 – Line X**

- Exceptionally elegant
- Ideal for closed surfaces (cleanroom)

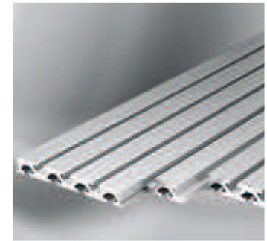
32



**Profiles 8 – flat cross-sections**

- Reduced construction height with full groove
- Suitable for use as a frame, support or strut

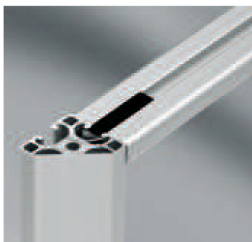
34



**Bed Plate Profile 8**

- For creating panels in any size
- As a cover or fastener

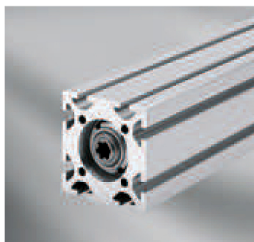
36



**Profiles 8 – 45° Angle**

- Elegant connection options for up to three profiles
- Ideal for display cases, tables and systems with an elegant aesthetic appeal

37



**Profiles 8 D**

- Large central bore
- Ideal for accommodating shafts, spindles and axles

39



**Profiles 8 W**

- Angled profiles for mounting components
- For use as a panel fixing strip

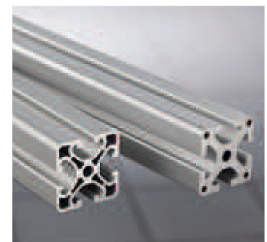
42



**Profiles 8 D40**

- Profiles with a cylindrical cross-section
- Covered grooves can be opened up

43



**Profiles 10 – modular dimension of 50 mm**

- New line for high-strength constructions
- Particularly secure fastenings

45