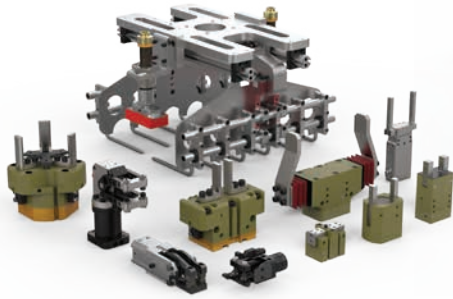


ABOUT DESTACO

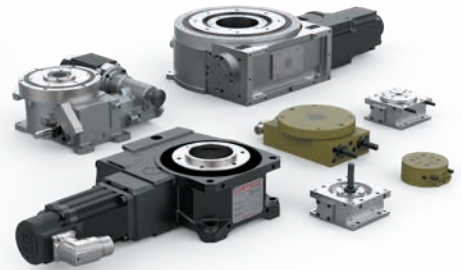
Built on a Strong Foundation



Gripping Solutions



Linear Positioning Solutions



Rotary Positioning Solutions



Clamping Solutions



CRL Remote Handling Solutions



Robotic Tooling Solutions

Destaco, a Dover company, is a global leader in the design and manufacture of high-performance automation, workholding and remote-handling solutions. The company serves customers in a variety of end-markets, including the automotive, life sciences, consumer packaged goods, aerospace, industrial and nuclear sectors.

Built on a legacy of more than 100 years, Destaco offers a comprehensive portfolio of products designed to engineer precise movement, placement and control solutions that drive productivity and uptime for manufacturers around the world. The Destaco family of products consists of industry-leading brands such as Destaco Manual Clamps, Power Clamps, and End Effectors; CAMCO™ and Ferguson™ Indexers; Robohand™ Grippers; and CRL™ Manipulators and Transfer Ports.

Destaco is based in Auburn Hills, Michigan, U.S.A. The company has more than 800 employees with 13 locations, in 9 countries, across the Americas, Europe and Asia.

Destaco is part of Dover Corporation, a diversified global manufacturer with annual revenues of \$7 billion. The company delivers innovative equipment and components, specialty systems and support services through four major operating segments: Energy, Engineered Systems, Fluids, and Refrigeration & Food Equipment. Headquartered in Downers Grove, IL, (NYSE: DOV)

More information is available at destaco.com and dovercorporation.com



Focusing all our Resources

New Product Development

Destaco has dedicated resources to design and build the next generation of products and solutions

Customer Service and Technical Support

Destaco has industry leading global support to address any product and application concerns you may have

Design Tools

Destaco provides an extensive CAD library, sizing software, and online tools to support our global customers



Our Insight Working for You

Application Engineering

We utilize our expertise and complete portfolio of products to create solutions that fit our customers' needs and applications

Custom Solutions

If our off-the-shelf solutions don't fit, we will partner with our customers to develop products that will



Manual and Pneumatic Toggle Clamps and Swing Clamps

Designed to Hold Securely

Markets



Industrial



Aerospace



Food & Packaging



Transportation



Consumer Goods

Applications



Assembly



Welding



Fixture and Testing



CNC/Machining



White Goods/
Appliance



Woodworking



Pneumatic Power Clamps

Clamp with Confidence

Markets



Transportation



Aerospace



Food & Packaging



Industrial

Applications



Welding



Fixture and Testing



White Goods/
Appliance



CNC/Machining



Electric Products

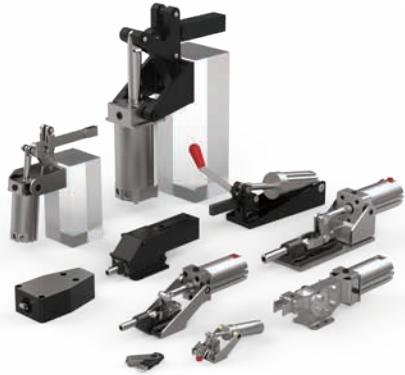


PNEUMATIC TOGGLE CLAMPS

Sizing and Application Chart

CLICK OR SCAN

To view full PDF catalog pages on these products



Series	Page #	Max. Holding Capacity N [lbf.]										Max. Exerting Force at 5bar [72PSI] N [lbf.]									
		0 to 1000 [0 to 225]	1000 to 2000 [225 to 450]	2000 to 3000 [450 to 675]	3000 to 5000 [675 to 1125]	5000 to 7000 [1125 to 1575]	7000 to 10000 [1575 to 2250]	10000+ [2250+]	0 to 1000 [0 to 225]	1000 to 2000 [225 to 450]	2000 to 3000 [450 to 675]	3000 to 4000 [675 to 900]	4000 to 5000 [900 to 1125]	5000 to 6000 [1125 to 1350]	6000 to 8000 [1350 to 1800]						

812 858 8021 827 1200 803	812	50	●																
	802	50	●							●									
	807	50			●						●								
	810	51				●										●			
	846	51				●										●			
	847	52				●											●		
	8007	51				●										●			
	858	52									●								●
	8021	52		●								●							
	8071	52		●												●			
	817	53		●								●							
	827	53				●										●			
	868	53																	●
	803	54			●											●			
	8031	54									●						●		
	830	54									●					●			
	850	54									●							●	
800*	54										●								
1200*	54										●								

*Pneumatic Single-Action Hold Down Clamp



CLICK OR SCAN
To view full PDF
catalog pages on
these products

PNEUMATIC TOGGLE CLAMPS

Sizing and Application Chart

Overall Height mm [inch]					Overall Length mm [inch]					Overall Width mm [inch]					Suitable Application Areas				Service Environ- ment														
0 to 50 [0 to 1.97]	50 to 75 [1.97 to 2.95]	75 to 100 [2.95 to 3.94]	100 to 125 [3.94 to 4.92]	125 to 150 [4.92 to 5.91]	150 to 175 [5.91 to 6.89]	175 to 200 [6.89 to 7.87]	200 to 225 [7.87 to 8.86]	225 to 250 [8.86 to 9.84]	250 to 275 [9.84 to 10.83]	275+ [10.83+]	125 to 150 [4.92 to 5.91]	150 to 175 [5.91 to 6.89]	175 to 200 [6.89 to 7.87]	200 to 225 [7.87 to 8.86]	225 to 250 [8.86 to 9.84]	250 to 300 [9.84 to 11.81]	300 to 400 [11.81 to 15.75]	400+ [15.75+]	20 to 40 [0.78 to 1.57]	40 to 60 [1.57 to 2.36]	60 to 80 [2.36 to 3.15]	80 to 100 [3.15 to 3.94]	100 to 120 [3.94 to 4.72]	Welding	Assembly	Light Machining	Duty Cycle	Accommodates Workpiece Variation	U-Bar Version	Solid Arm Version	Normal	Harsh/Dirty	
●										●									●					●	○	○	●	○				✓	✓
	●											●							●					○	○	○	○				✓	✓	
		●												●					●					○	○	○	○				✓	✓	
			●												●				●					○	○	○	○				✓	✓	
				●												●			●					○	○	○	○				✓	✓	
					●												●		●					○	○	○	○				✓	✓	
																	●		●					○	○	○	○				✓	✓	
																			●					○	○	○	○				✓	✓	
																			●					○	○	○	○	✓			✓	✓	

○ Excellent/High ○ Fair/Medium ● Poor/Low ⊗ Not Recommended

PNEUMATIC SWING CLAMPS

Sizing and Application Chart

CLICK OR SCAN
To view full PDF
catalog pages on
these products



Series	Page #	Bore Size mm [in]						Total Stroke mm [in]						Clamp Stroke mm [in]						Clamping Force N [lbf]								
		Less than 20 [0.79]	20 to 30 [0.79 to 1.18]	30 to 40 [1.18 to 1.57]	40 to 50 [1.57 to 1.97]	50 to 60 [1.97 to 2.36]	60+ [2.36+]	10 to 20 [0.39 to 0.78]	20 to 30 [0.78 to 1.18]	30 to 40 [1.18 to 1.57]	40 to 50 [1.18 to 1.57]	50 to 60 [1.18 to 1.57]	0 to 10 [0 to 0.39]	10 to 20 [0.39 to 0.78]	20 to 30 [0.78 to 1.18]	0 to 100	100 to 500	500 to 1000	1000 to 2000	Arm Rotation - Top of Stroke	Block Body Style	Threaded Body Style	Flanged Body Style	Sensor Ready	360° Arm Adjustability	Clamp Arm/Spindle Incl.	Manual Operation	Confined Space Operation
9522-2	55	●					●					●			●				●	✓		✓	✓					✓
9530-2	55		●				●					●			●				●	✓		✓	✓					✓
9540-2	55			●			●					●			●				●	✓		✓	✓					✓
9550-2	55				●		●					●			●				●	✓		✓	✓					✓
89R20	56	●					●					●			●				●	✓		✓	✓					
89R32	56		●				●					●			●				●	✓		✓	✓					
89R40-010	56			●			●					●			●				●	✓		✓	✓					
89R40-025	56			●			●		●			●			●				●	✓		✓	✓					
89R50	56				●		●					●			●				●	✓		✓	✓					
89R63	56					●	●					●			●				●	✓		✓	✓					
89B20	56	●					●					●			●				●	✓		✓	✓					
89B32	56		●				●					●			●				●	✓		✓	✓					
89B40	56			●			●					●			●				●	✓		✓	✓					
89B50	56				●		●		●			●			●				●	✓		✓	✓					
89B63	56					●	●					●			●				●	✓		✓	✓					
8315	57	●					●					●			●				●	✓		✓	✓	✓				
89E20	57		●				●					●			●				●	✓		✓	✓					
89E32	57			●			●					●			●				●	✓		✓	✓					
89E40	57				●		●					●			●				●	✓		✓	✓					
89E50	57					●	●		●			●			●				●	✓		✓	✓					
89E63	57						●		●			●			●				●	✓		✓	✓					
8215	58	●					●					●			●				●	✓		✓	✓	✓				
8415/8416	58		●				●					●			●				●	✓		✓	✓	✓				
035-125	58		●				●					●			●				●	✓		✓	✓					
035-132	58			●			●					●			●				●	✓		✓	✓					
035-140	58				●		●		●			●			●				●	✓		✓	✓					
035-150	58					●	●					●			●				●	✓		✓	✓					
035-225	58		●				●					●			●				●	✓		✓	✓					
035-232	58			●			●					●			●				●	✓		✓	✓					
035-240	58				●		●					●			●				●	✓		✓	✓					
035-250	58					●	●					●			●				●	✓		✓	✓					
8725	59		●				●					●			●				●	✓		✓	✓					✓
8732	59			●			●					●			●				●	✓		✓	✓					✓
8740	59				●		●					●			●				●	✓		✓	✓					✓
8750	59						●					●			●				●	✓		✓	✓					✓
6004-SW	61		N/A				●					●			●				●	✓		✓	✓	✓				✓

Color handles available. See pg. 7 for more info.

PNEUMATIC POWER CLAMPS

Sizing and Application Chart

CLICK OR SCAN
To view full PDF
catalog pages on
these products



Series	Page	Holding Torque at 5 bar Nm					Clamping Torque at 5 bar Nm					Piston Diameter mm							
		0 to 100	100 to 500	500 to 1000	1000 to 2000	2000 to 4000	0 to 100	100 to 500	500 to 1000	1000 to 2000	2000 to 4000	Less than 25	25	32	40	50	63	80	
81L	66	●					●					●							
82L-4	67	●					●					●	●						
82L-2	68	●	●				●	●					●	●	●				
TCC-2	72	●					●									●	●		
82M-3E	74		●		●	●		●	●						●	●	●		
52H-3E	76				●														
870/871	82		●				●									●			
860/861	83			●				●									●		
890/891	83				●			●										●	
1000/1001	83				●				●									●	●
82D	84		●				●	●								●		●	
84A	86		●	●			●	●								●	●		



CLICK OR SCAN

To view full PDF catalog pages on these products

PNEUMATIC POWER CLAMPS

Sizing and Application Chart

Material	Weight Kg	Air Consumption per Double Stroke at 5 bar dm ³				Suitable Application Areas																		
		0 to 2	2-4	4-6	6-8	0 to 0.5	0.50 to 1.00	1.00 to 2.00	More than 2.00	Welding	Assembly	Dirty Environment	End Effectors	Machining	Duty Cycle	Adjustable Opening Angle	Inductive Sensors Available	Dual Arms	Tolerance Compensation	Manual Version Available	Center Arm	Lateral Arms	Toggle Locking	
Aluminum	Steel	0 to 2	2-4	4-6	6-8	More than 8	0 to 0.5	0.50 to 1.00	1.00 to 2.00	More than 2.00	Welding	Assembly	Dirty Environment	End Effectors	Machining	Duty Cycle	Adjustable Opening Angle	Inductive Sensors Available	Dual Arms	Tolerance Compensation	Manual Version Available	Center Arm	Lateral Arms	Toggle Locking
●		●				●	●	●	●	●	⊗	●	○	●	○	○						✓		✓
●		●				●	●	●	●	●	●	●	●	●	●	●	✓	✓			✓	✓	✓	✓
●		●	●			●	●	●	●	●	●	●	●	○	●	○	✓	✓			✓	✓	✓	✓
●		●	●			●	●	●	●	●	●	●	●	○	●	○	✓	✓		✓		✓	✓	✓
●		●				●	●	●	●	●	⊗	●	○	●	●	●	✓	✓			✓	✓	✓	✓
	●	●				●	●	●	●	●	⊗	●	○	●	●	●						✓		✓
	●	●				●	●	●	●	●	⊗	●	○	●	●	○						✓		✓
	●	●				●	●	●	●	●	⊗	●	○	●	●	○						✓		✓
●		●	●			●	●	●	●	●	●	●	○	●	●	●		✓	✓					✓
●		●				●	●	●	●	●	●	●	○	●	○		✓	✓	✓			✓		

● Excellent/High ○ Fair/Medium ● Poor/Low ⊗ Not Recommended

812, 802, 807

CLICK OR SCAN
QR codes for full catalog
pages on products

Pneumatic Toggle Clamps

812 Series

812-U



High temperature version
available upon request. Add **-HT**

Optional Sensors: 810156, 810158
Replacement Clamp Assembly: 812-U-LC
Replacement Cylinder Assembly: 812CYL

Model	Maximum Holding Capacity		Maximum Exerting Force @ 5bar [72PSI]		Accessories (Supplied)	
	Inner	Outer	Inner	Outer	Spindle Accessory	Flanged Washers
812-U	[100 lbf] 440 N	[55 lbf] 245 N	[136 lbf] 613 N	[92 lbf] 413 N	305208-M	102111

802 Series

802-U
802-UE



Replacement Seal Kit: 802550-20-1-00
Replacement Clamp Assembly: 802-U-LC
Replacement Cylinder Assembly: 802CYL

Sensor Accessories
Round Reed Switch with Quick Disconnect
T-slot Reed Switch with Quick Disconnect
Quick Disconnect 2M Extension Cable
Quick Disconnect 5M Extension Cable

Item Number
810169
8EA-109-1
CABL-010
CABL-013

Model	Maximum Holding Capacity		Max. Exerting Force @ 5bar [72PSI]		Accessories (Supplied)	
	Inner	Outer	Inner	Outer	Spindle Accessory	Flanged Washers
802-U	[200 lbf] 890 N	[110 lbf] 490 N	[200 lbf] 890 N	[110 lbf] 490 N	202208-M	215105
802-UE						

807 Series

807-U
807-UE



807-S
807-SE



High temperature version
available upon request. Add **-HT**

Replacement Seal Kit: 802450-32-1-00
Replacement Clamp Assembly: 807-U-LC, 807-S-LC
Replacement Cylinder Assembly: 807CYL

Sensor Accessories
Round Reed Switch with Quick Disconnect
T-slot Reed Switch with Quick Disconnect
Quick Disconnect 2M Extension Cable
Quick Disconnect 5M Extension Cable

Item Number
810169
8EA-109-1
CABL-010
CABL-013

Model	Maximum Holding Capacity		Maximum Exerting Force @ 5bar [72PSI]		Accessories (Supplied)		
	Inner	Outer	Inner	Outer	Spindle Accessory	Flanged Washers	Bolt Retainer
807-U	[375 lbf] 1670 N	[275 lbf] 1220 N	[576 lbf] 2573 N	[297 lbf] 1327 N	--	507107	--
807-UE					2007208-M		
807-S	[500 lbf] 2220 N	[260 lbf] 1160 N	[540 lbf] 2412 N	[180 lbf] 804 N	--	--	207105
807-SE							

CLICK OR SCAN
QR codes for full catalog
pages on products

810, 846, 8007

Pneumatic Toggle Clamps

810 Series

810-U
810-UE



810-S
810-SE



Model	Maximum Holding Capacity		Maximum Exerting Force @ 5bar [72PSI]		Accessories (Supplied)		
	Inner	Outer	Inner	Outer	Spindle Accessory	Flanged Washers	Bolt Retainer
810-U	[600 lbf] 2670 N	[290 lbf] 1290 N	[856 lbf] 3834 N	[407 lbf] 1823 N	--	235106	--
810-UE					240208-M		
810-S	[750 lbf] 3340 N	[500 lbf] 2220 N	[702 lbf] 3143 N		--	--	210114
810-SE							

Replacement Seal Kit: 810450-40-1-00
Replacement Clamp Assembly: 810-U-LC, 810-S-LC
Replacement Cylinder Assembly: 810CYL

Sensor Accessories
Round Reed Switch with Quick Disconnect
T-slot Reed Switch with Quick Disconnect
Quick Disconnect 2M Extension Cable
Quick Disconnect 5M Extension Cable

Item Number
810169
8EA-109-1
CABL-010
CABL-013

846 Series

846 ⓘ



Model	Maximum Holding Capacity		Max. Exerting Force @ 5bar [72PSI]	
	Inner	Outer	Inner	Outer
846 ⓘ	[750 lbf] 3340 N	[520 lbf] 2310 N	[786 lbf] 3520 N	[491 lbf] 2200 N

Replacement Seal Kit: 810450-40-1-00
Replacement Clamp Assembly: 846-LC
Replacement Cylinder Assembly: 846CYL

Sensor Accessories
Round Reed Switch with Quick Disconnect
T-slot Reed Switch with Quick Disconnect
Quick Disconnect 2M Extension Cable
Quick Disconnect 5M Extension Cable

Item Number
810169
8EA-109-1
CABL-010
CABL-013

ⓘ This item is available upon request

8007 Series

8007-E



8007-EHL



8007-EHR



Model	Maximum Holding Capacity		Max. Exerting Force @ 5bar [72PSI]	
	Inner	Outer	Inner	Outer
8007-E				
8007-EHL	[830 lbf] 3700 N	[405 lbf] 1800 N	[606 lbf] 2700 N	[225 lbf] 1000 N
8007-EHR				

Replacement Clamp Assembly: 8007-LC

Sensor Accessories
Round Reed Switch with Quick Disconnect
T-slot Reed Switch with Quick Disconnect
Quick Disconnect 2M Extension Cable
Quick Disconnect 5M Extension Cable

Item Number
810169
8EA-109-1
CABL-010
CABL-013

847, 858, 8021, 8071

CLICK OR SCAN
QR codes for full catalog
pages on products

Pneumatic Toggle Clamps

847 Series



847-U



847-S



Model	Maximum Holding Capacity		Max. Exerting Force @ 5bar [72PSI]		Accessories (Supplied)		
	Inner	Outer	Inner	Outer	Spindle Accessory	Flanged Washers	Bolt Retainer
847-U	[1000 lbf] 4450 N	[480 lbf] 2135 N	[948 lbf] 4248 N	[450 lbf] 2018 N	--	247109	--
847-S	[1000 lbf] 4450 N	[650 lbf] 2890 N		[426 lbf] 1912 N	--	--	247110

Replacement Seal Kit: 847450-50-1-00
Replacement Clamp Assembly: 847-U-LC, 847-S-LC
Replacement Cylinder Assembly: 847CYL

Sensor Accessories	Item Number
Round Reed Switch with Quick Disconnect	810169
T-slot Reed Switch with Quick Disconnect	8EA-109-1
Quick Disconnect 2M Extension Cable	CABL-010
Quick Disconnect 5M Extension Cable	CABL-013

858 Series



858
858-E



Model	Maximum Holding Capacity		Max. Exerting Force @ 5bar [72PSI]	
	Inner	Outer	Inner	Outer
858	[4,000 lbf] 17800 N	[2,000 lbf] 8900 N	[1,530 lbf] 6857 N	[800 lbf] 3585 N
858-E				

Replacement Seal Kit: 850450-63-1-00
Replacement Clamp Assembly: 858-LC
Replacement Cylinder Assembly: 858CYL

Sensor Accessories	Item Number
Round Reed Switch with Quick Disconnect	810169
T-slot Reed Switch with Quick Disconnect	8EA-109-1
Quick Disconnect 2M Extension Cable	CABL-010
Quick Disconnect 5M Extension Cable	CABL-013

8021, 8071 Series



8021 ⓘ
8021-UE ⓘ



8071
8071-UE



Model	Maximum Holding Capacity		Max. Exerting Force @ 5bar [72PSI]		Accessories (Supplied)	
	Inner	Outer	Inner	Outer	Spindle Accessory	Flanged Washer
8021 ⓘ	[390 lbf] 1735 N	[255 lbf] 1135 N	[169 lbf] 760 N	[100 lbf] 449 N	--	8021122
8021-UE ⓘ						
8071	[450 lbf] 2000 N	[310 lbf] 1380 N	[496 lbf] 2218 N	[283 lbf] 1267 N	--	507107
8071-UE						

Replacement Seal Kit: 8021: 802450-32-1-00
8071: 810450-40-1-00

Sensor Accessories	Item Number
Round Reed Switch with Quick Disconnect	810169
T-slot Reed Switch with Quick Disconnect	8EA-109-1
Quick Disconnect 2M Extension Cable	CABL-010
Quick Disconnect 5M Extension Cable	CABL-013

ⓘ This item is available upon request.

Pneumatic Toggle Clamps

817, 827 Series



817-U
817-UE



817-S
817-SE



827-U
827-UE



827-S
827-SE



Model	Max. Holding Capacity		Max. Exerting Force @ 5bar [72PSI]		Accessories (Supplied)		
	Inner	Outer	Inner	Outer	Spindle Accessory	Flanged Washers	Bolt Retainer
817-U	[375 lbf] 1670 N		[369 lbf] 1648 N		--	507107	--
817-UE		[200 lbf] 890 N		[225 lbf] 1005 N	225208-M		
817-S	[450 lbf] 2000 N		[360 lbf] 1608 N		--	--	207107
817-SE							
827-U	[600 lbf] 2670 N	[390 lbf] 1735 N		[309 lbf] 1383 N	--	235106	--
827-UE			[491 lbf] 2200 N		240208-M		
827-S	[700 lbf] 3110 N	[330 lbf] 1470 N		[281 lbf] 1257 N	--	--	210114
827-SE							

Replacement Seal Kit: 817: 802450-32-1-00, 827: 810450-40-1-00
Replacement Clamp Assembly: 817-U-LC, 817-S-LC, 827-U-LC, 827-S-LC
Replacement Cylinder Assembly: 817: 807CYL, 827: 810CYL

Sensor Accessories

Round Reed Switch with Quick Disconnect
T-slot Reed Switch with Quick Disconnect
Quick Disconnect 2M Extension Cable
Quick Disconnect 5M Extension Cable

Item Number

810169
8EA-109-1
CABL-010
CABL-013

868 Series

868
868-E



Model	Max. Holding Capacity		Max. Exerting Force @ 5bar [72PSI]	
	Inner	Outer	Inner	Outer
868	[4000 lbf] 17800 N	[2400 lbf] 10675 N	[1704 lbf] 7637 N	[800 lbf] 3585 N
868-E				

Replacement Seal Kit: 850450-63-1-00
Replacement Clamp Assembly: 868-LC
Replacement Cylinder Assembly: 868CYL

Sensor Accessories

Round Reed Switch with Quick Disconnect
T-slot Reed Switch with Quick Disconnect
Quick Disconnect 2M Extension Cable
Quick Disconnect 5M Extension Cable

Item Number

810169
8EA-109-1
CABL-010
CABL-013

8031 Series

8031 ⓘ



Model	Maximum Holding Capacity	Maximum Exerting Force @ 5bar [72PSI]
8031 ⓘ	[2000 lbf] 8900 N	[731 lbf] 3285 N



Sensor Accessories

Round Reed Switch with Quick Disconnect
Quick Disconnect 2M Extension Cable
Quick Disconnect 5M Extension Cable

Item Number

810169
CABL-010
CABL-013

803, 830, 850, 800, 1200

CLICK OR SCAN
QR codes for full catalog
pages on products

Pneumatic Toggle Clamps

803 Series

803
803-ME



Model	Max. Holding Capacity	Max. Exerting Force @ 5bar [72PSI]
803	[600 lbf] 2670 N	[675 lbf] 3015 N
803-ME		

High temperature version available upon request. Add **-HT**

Replacement Seal Kit: 802450-32-1-00
Replacement Clamp Assembly: 803-LC, 803-M-LC
Replacement Cylinder Assembly: 807CYL

Sensor Accessories	Item Number
Round Reed Switch with Qk Disconnect	810169
T-slot Reed Switch with Qk Disconnect	8EA-109-1
Quick Disconnect 2M Extension Cable	CABL-010
Quick Disconnect 5M Extension Cable	CABL-013

830 Series

830
830-ME



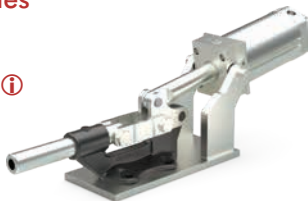
Model	Maximum Holding Capacity	Maximum Exerting Force @ 5bar [72PSI]
830	[2500 lbf] 11100 N	[800 lbf] 3582 N
830-ME		

Replacement Seal Kit: 810450-40-1-00
Replacement Clamp Assembly: 830-LC, 830-M-LC
Replacement Cylinder Assembly: 810CYL

Sensor Accessories	Item Number
Round Reed Switch with Quick Disconnect	810169
T-slot Reed Switch with Quick Disconnect	8EA-109-1
Quick Disconnect 2M Extension Cable	CABL-010
Quick Disconnect 5M Extension Cable	CABL-013

850 Series

850 ⓘ
850-ME ⓘ



Model	Maximum Holding Capacity	Maximum Exerting Force @ 5bar [72PSI]
850 ⓘ	[16,000 lbf] 71200 N	[1232 lbf] 5522 N
850-ME ⓘ		

Replacement Seal Kit: 850450-63-1-00
Replacement Clamp Assembly: 850-LC, 850-M-LC
Replacement Cylinder Assembly: 868CYL

Sensor Accessories	Item Number
Round Reed Switch with Quick Disconnect	810169
T-slot Reed Switch with Quick Disconnect	8EA-109-1
Quick Disconnect 2M Extension Cable	CABL-010
Quick Disconnect 5M Extension Cable	CABL-013

ⓘ This item is available upon request.

800, 1200 Series

Pneumatic Single-Action Hold Down Clamp

800



800-E



1200 ⓘ



1200-E ⓘ



Repair Kits: 800-00,
1200-00



Model	Exerting Force @ 4,8 bar [70 psi] N [lbf]
800	[800] 3560
800-E	[500] 2225
1200 ⓘ	[1200] 5340
1200-E ⓘ	[775] 3450

ⓘ This item is available upon request

CLICK OR SCAN
QR codes for full catalog
pages on products

9500

Pneumatic Swing Clamps



9500 Series

9522-2



9530-2



9540-2



9550-2



Shown with optional clamping arm.

Model	Swing Direction	Clamping Force† [lbf]N	Ports	Replacement Seal Kit	Side Flange Kit	Tapped Hole Kit	Standard Mount Kit	Clamp Arm
9522-2L	LH	[34] 150	M5	952292	952260	952261	952262	9522153
9522-2R	RH							9522150
9530-2L	LH	[76] 340	1/8NPT	953092	954060	954061	953062	9540150
9530-2GL			G-1/8					
9530-2R	RH		1/8NPT					
9530-2GR	G-1/8							
9540-2L	LH	[123] 550	1/8NPT	954092	954060	954061	953062	9540153
9540-2GL			G-1/8					
9540-2R	RH		1/8NPT					
9540-2GR	G-1/8							
9550-2L	LH	[196] 870	1/8NPT	955092	955060	955061	953062	9550150
9550-2GL			G-1/8					9550153
9550-2R	RH		1/8NPT					9550150
9550-2GR			G-1/8					9550153

† with standard clamping arm @ 5bar [72psi].



89R, 89B

CLICK OR SCAN
QR codes for full catalog
pages on products

Pneumatic Swing Clamps

89R Series

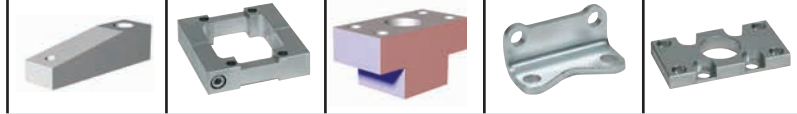


Model	Swing Direction*	Clamping Force† [lbf]N	Replacement Seal Kit	Clamp Arm	Body Mount Flanges	Clamp Arm Adapter	Mounting Feet	End Mount Flanges
89R20-010-2	LH, RH	[18] 80	89R20-00	8JG-215-1	8MA-092-1	8MA-084-1	8MW-018-1	8MA-061-1
89R32-010-2	LH, RH, STRT	[55] 245	89R32-00	8JG-217-1	8MA-094-1	8MA-086-1	8MW-020-1	8MA-063-1
89R40-010-2		[85] 380	89R40-00	8JG-218-1	8MA-095-1	8MA-087-1	8MW-021-1	8MA-064-1
89R40-025-2		[138] 614	89R50-00	8JG-219-1	8MA-096-1	8MA-088-1	8MW-022-1	8MA-065-1
89R50-025-2		[218] 970	89R63-00	8JG-220-1	--	8MA-089-1	8MW-023-1	8MA-066-1
89R63-025-2								

*Swing direction is field adjustable.

†with standard clamping arm @ 5bar [72psi].

Note: Switches are optional. To order with (2) 8EA-109-1 switches, add **A** to the end of the model.
Ex. 89R32-010-2**A**



89B Series



Model	Swing Direction	Clamping Force [lbf.]N†	Replacement Seal Kit	Clamp Arm	Clamp Arm Adapter
89B20-010-2R	RH	[29] 130	89B/E20-2-00	8JG-215-1	8MA-084-1
89B20-010-2L	LH				
89B32-010-2R	RH	[79] 350	89B/E32-2-00	8JG-217-1	8MA-086-1
89B32-010-2L	LH				
89B40-010-2R	RH	[130] 580	89B/E40-2-00	8JG-218-1	8MA-087-1
89B40-010-2L	LH				
89B50-025-2R	RH	[225] 1000	89B/E50-2-00	8JG-219-1	8MA-088-1
89B50-025-2L	LH				
89B63-008-2R	RH	[321] 1430	89B/E63-2-00	8JG-220-1	8MA-089-1
89B63-008-2L	LH				

†with standard clamping arm at 6bar [87psi].

Note: Switches are optional. To order clamp with (2) 8EA-109-1 switches, add **A** to the end of the model. EX. 89B30-010-2**RA**.



CLICK OR SCAN
QR codes for full catalog
pages on products

8100, 8300, 89E

Pneumatic Swing Clamps



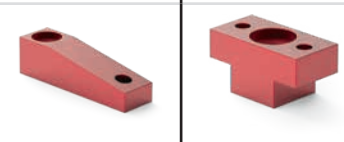
8100, 8300 Series



Model	Swing Direction	Clamping Force [lbf.]N†	Replacement Seal Kit	Clamp Arm	Clamp Arm Adapter
8115	RH	[25]	801560	801528	801532
8116	LH	110		801529	
8315	RH	[89]	821560	821512	821556
8316	LH	400		821513	

† with standard clamping arm at 5bar [72psi].

Note: To order without clamping arm, add -LA to the end of the model number. EX. 8115-LA.

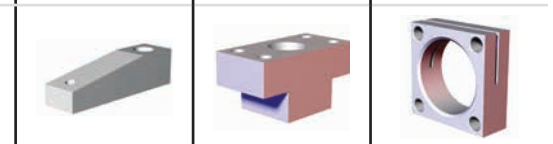


89E Series



Model	Swing Direction	Clamping Force [lbf.]N†	Replacement Seal Kit	Clamp Arm	Clamp Arm Adapter	Mounting Flanges
89E20-010-2R	RH	[29]	89E/E20-2-00	8JG-215-1	8MA-084-1	8MA-219-1
89E20-010-2L	LH	130				
89E32-010-2R	RH	[79]	89E/E32-2-00	8JG-217-1	8MA-086-1	8MA-220-1
89E32-010-2L	LH	350				
89E40-010-2R	RH	[130]	89E/E40-2-00	8JG-218-1	8MA-087-1	8MA-221-1
89E40-010-2L	LH	580				
89E50-025-2R	RH	[225]	89E/E50-2-00	8JG-219-1	8MA-088-1	8MA-222-1
89E50-025-2L	LH	1000				
89E63-008-2R	RH	[321]	89E/E63-2-00	8JG-220-1	8MA-089-1	8MA-223-1
89E63-008-2L	LH	1430				

† with standard clamping arm at 6bar [87psi]



8000, 8200, 8400, 035

CLICK OR SCAN
QR codes for full catalog
pages on products

Pneumatic Swing Clamps


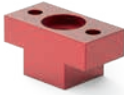

8000, 8200, 8400 Series



Model	Swing Direction	Clamping Force [lbf.]N†	Replacement Seal Kit	Clamp Arm	Clamp Arm Adapter	Mounting Flanges
8015	RH	[18]	801560	801528 801529	801532	801553
8016	LH	80				
8215	RH	[67]	821560	821512	821556	821553
8216	LH	300				
8415	RH	[55]	841560	821513	--	841550
8416	LH	245				

† with standard clamping arm at 6bar [87psi]

Note: To order without clamping arm, add -LA to the end of the model number. EX. 8015-LA.

035 Series





035-1



Model	Swing Direction	Clamping Force [lbf.] N†	Replacement Seal Kit	Clamp Arm	Mounting Flanges
035-125-190	RH	[20]	905516	036-551-01 036-551-02	051-150-160
035-125-290	LH	89			
035-132-190	RH	[30]	905517	036-630-01 036-630-02	051-187-160
035-132-290	LH	133			
035-140-190	RH	[60]	905518	036-630-01 036-630-02	051-225-160
035-140-290	LH	267			
035-150-190	RH	[69]	905519	036-787-01 036-787-02	051-250-160
035-150-290	LH	307			
035-225-190	RH	[20]	905516	036-551-01 036-551-02	--
035-225-290	LH	89			
035-232-190	RH	[30]	905517	036-630-01 036-630-02	--
035-232-290	LH	133			
035-240-190	RH	[60]	905518	036-630-01 036-630-02	--
035-240-290	LH	267			
035-250-190	RH	[69]	905519	036-787-01 036-787-02	--
035-250-290	LH	307			

† with standard clamping arm at 5bar [72psi].

035-2



CLICK OR SCAN
 QR codes for full catalog
 pages on products

8700

Pneumatic Lever Clamps



8700 Series

8725



8732
8732G



8740
8740G



8750
8750G



Model	Clamping Force† N [lbf.]	Seal Kit	Mounting Flanges
8725	195 [43]	872500	872550
8732 8732G	285 [64]	873200	873250
8740 8740G	470 [106]	874000	874050
8750 8750G	745 [167]	875000	875050

† at 5bar [72psi].



SENSOR ACCESSORIES

CLICK OR SCAN
QR codes for full catalog
pages on products

for Pneumatic Swing and Toggle Clamps

810169
810173
810174

8EA-109-1
8EA-120-1
810170
810171

810151
810153
810155
810157



Tie rod clip 810151-1 included.

810156
810158

810153



Item Number	Mount Style	Connector	Length	Function	Voltage	Max. Switching Current	Voltage Drop
810169	Round	M8 male quick connect	165mm [6.5in.]	Reed	5-120V AC/DC	50mA	3.0V
810173				PNP	4.5-28V DC	100mA	0.5V
810174				NPN	4.5-28V DC	100mA	0.5V
8EA-109-1	T-slot	M8 male quick connect	300mm [11.8in.]	Reed	10-30V DC	100mA	3.0V
8EA-120-1		M12 male quick connect	300mm [11.8in.]	Reed	15-30 V AC/DC	500mA	1.5V
810170		M8 male quick connect	165mm [6.5in.]	PNP	10-30V DC	100mA	2.0V
810171	Tie Rod	No connector cord	2.7m [9ft.]	NPN	10-30V DC	100mA	2.0V
810151				Reed	5-120V AC/DC	500mA	3.5V
810153				Reed	24-240V AC	4A	1.0V
810155				PNP	6-24V DC	500mA	1.0V
810157	Band Clamp			NPN	6-24V DC	500mA	1.0V
810156				Reed	5-120V AC/DC	500mA	3.5V
810158				PNP	6-24V DC	500mA	1.0V



Item Number	Length
CABL-010	2 Meter [78in.]
CABL-013	5 Meter [16.4ft.]

CLICK OR SCAN


QR codes for full catalog pages on products

6004-SW

Manual Swing Clamps

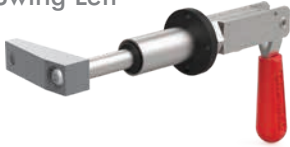
6004-SW Series

Max. Holding Capacity: [2,000 lbf] 450 N
(Straight pull. Does not account for clamp arm.)

 Color handle option available.
See pg. 7 for more info.



6004-SWL
Clamp Arm
Swing Left



6004-SWR
Clamp Arm
Swing Left



Applied Force (on handle)	[40] 178	[30] 133	[20] 89	[10] 44
Plunger Pull Force (straight pull)	[576] 2562	[432] 1922	[288] 1281	[144] 641
Clamp Force (with arm shown below)	[323] 1437	[269] 1197	[189] 841	[108] 480

K, WK, WR

CLICK OR SCAN
QR codes for full catalog
pages on products

Pneumatic Power Cylinders

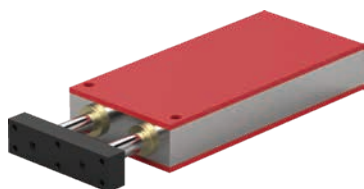


Model	Piston force within forward stroke at 6 bar kN [lbf]	Clamping force within power stroke at 6 bar kN [lbf]	(P) Power stroke mm [in]
K400	0,68 [153]	4 [900]	6 [0.24]
K600	1,06 [238]	6 [1350]	6 [0.24]
K1000	1,75 [393]	10 [2250]	7* [0.27]
K3000	3 [674]	30 [6700]	6* [0.24]
K4500	4,2 [944]	45 [10120]	6* [0.24]

*Power strokes up to 12mm and other forward strokes upon request.

Model	Piston force within forward stroke at 6 bar kN [lbf]	Clamping force within power stroke at 6 bar kN [lbf]	(P) Power stroke mm [in]
WK400	0,68 [153]	4 [900]	6 [0.24]
WK600	1,06 [238]	6 [1350]	6 [0.24]
WK1000	1,75 [393]	10 [2250]	7* [0.27]
WK3000	3 [674]	30 [6700]	6* [0.24]
WK4500	4,2 [944]	45 [10120]	6* [0.24]
WK6000	6,0 [1350]	60,0 [13490]	6* [0.24]

*Power strokes up to 12mm and other forward strokes upon request.



Model	Piston force within forward stroke at 6 bar kN [lbf]	Clamping force within power stroke at 6 bar [lbf] kN	Power stroke mm [in]
WR 2000	2 [450]	20 [4500]	7 [0.27]



K AND WK SENSOR OPTIONS

Pneumatic Power Cylinders



Pneumatic Power Cylinders Type K and WK with end position control by magnetic field sensors

How to Order

Indicate "-A" at the end of Model instead of "-1" for standard model.

Example:

Standard Model Number: K400-15-6-1

Model with Sensors: K400-15-6-A

(Not available on WK6000)



Sensor cage for T-slot proximity sensor

How to Order

Indicate "-K" at the end of Model instead of "-A" for standard version.

Example:

K400-15-6-A change to K400-15-6-K

(Not available on WK6000)

81L

Pneumatic Power Clamps | Miniature

CLICK OR SCAN
QR codes for
full catalog pages
on products



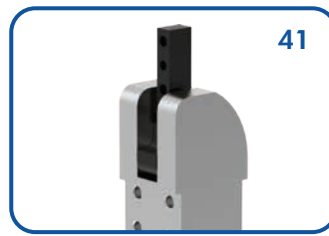
81L 12-1 01 00

Size	Description
12-1	12 mm Cylinder (M5 Port)
16-1	16 mm Cylinder (M5 Port)
20-1	20 mm Cylinder (M5 Port)
25-1	20 mm Cylinder (M5 Port)

Arm Style	Description
01	Clamping arm, horizontal
41	Clamping arm, vertical

See below for further details

Design	Description
00	Standard design



12
Max Holding Torque
25 Nm [18.4 ft-lb]
Max Clamping Torque
4,5 Nm [3.3 ft-lb]
at 5 bar [72 psi]

16
Max Holding Torque
60 Nm [44.3 ft-lb]
Max Clamping Torque
7 Nm [5.2 ft-lb]
at 5 bar [72 psi]

20
Max Holding Torque
100 Nm [73.8 ft-lb]
Max Clamping Torque
18 Nm [13.3 ft-lb]
at 5 bar [72 psi]

25
Max Holding Torque
100 Nm [73.8 ft-lb]
Max Clamping Torque
18 Nm [13.3 ft-lb]
at 5 bar [72 psi]

Accessories/Replacement Parts

Model	Seal Kits
81L12-1....	81L12-1-00
81L16-1....	81L16-1-00
81L20-1....	81L20-1-00
81L25-1....	81L20-1-00

Order No.
8EA-109-1
82ZB-004-1

Description (order separately)
Sensor, 3-wire cable, M8x1 connector, 3-pin
Adapter for mounting 81L20-1, 81L25-1 to 25mm dia. bar



CLICK OR SCAN
QR codes for
full catalog pages
on products

Enclosed Pneumatic Power Clamps | Miniature

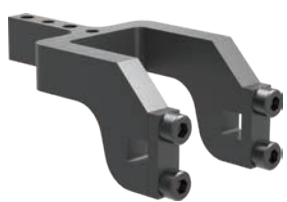
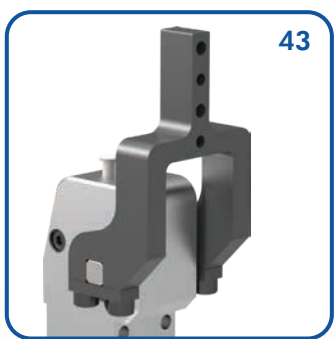
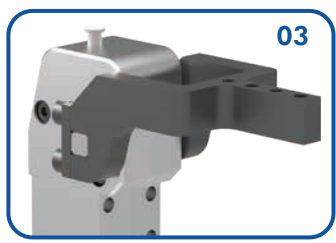
82L **16-4** **03** **0**

Size	Description
12-4	12 mm Cylinder (M5 Port)
16-4	16 mm Cylinder (M5 Port)
20-4	20 mm Cylinder (M5 Port)
25-4	25 mm Cylinder (M5 Port)

Arm Style	Description
00	No clamping arm
03	U-bar, central 90°
43	U-bar, central 180°

See below for further details

Opening Angle	Description
0	105° (Standard)
3	90°
4	75°
5	60°
6	45°
7	30°
8	15°



Model	Order No. for Arm
82L12-4...	8JG-401-1-01
82L16-4...	8JG-402-1-01
82L20-4...	8JG-403-1-01
82L25-4...	8JG-404-1-01



	12	16	20	25
Max Holding Torque	35 Nm [25.8 ft-lb]	40 Nm [29.5 ft-lb]	50 Nm [36.9 ft-lb]	80 Nm [59.0 ft-lb]
Max Clamping Torque	10,4 Nm [7.7 ft-lb]	12,4 Nm [9.1 ft-lb]	21 Nm [15.5 ft-lb]	31,8 Nm [23.4 ft-lb]
90° version:	8,7 Nm [6.4 ft-lb]	11 Nm [8.1 ft-lb]	19,3 Nm [14.2 ft-lb]	28,5 Nm [21.0 ft-lb]
180° version:	8,7 Nm [6.4 ft-lb]	11 Nm [8.1 ft-lb]	19,3 Nm [14.2 ft-lb]	28,5 Nm [21.0 ft-lb]
	at 5 bar [72 psi]	at 5 bar [72 psi]	at 5 bar [72 psi]	at 5 bar [72 psi]

Accessories

Order No.	Description (order separately)
8EA-109-1	Sensor, 3-wire cable, M8x1 connector, 3-pin
8ZZB-004-1	Adapter for mounting 82L20-4, 82L25-4 to 25mm dia. bar

82L-3E

Enclosed Pneumatic Power Clamps | Lightweight Modular

CLICK OR SCAN
QR codes for
full catalog pages
on products



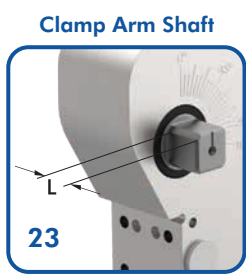
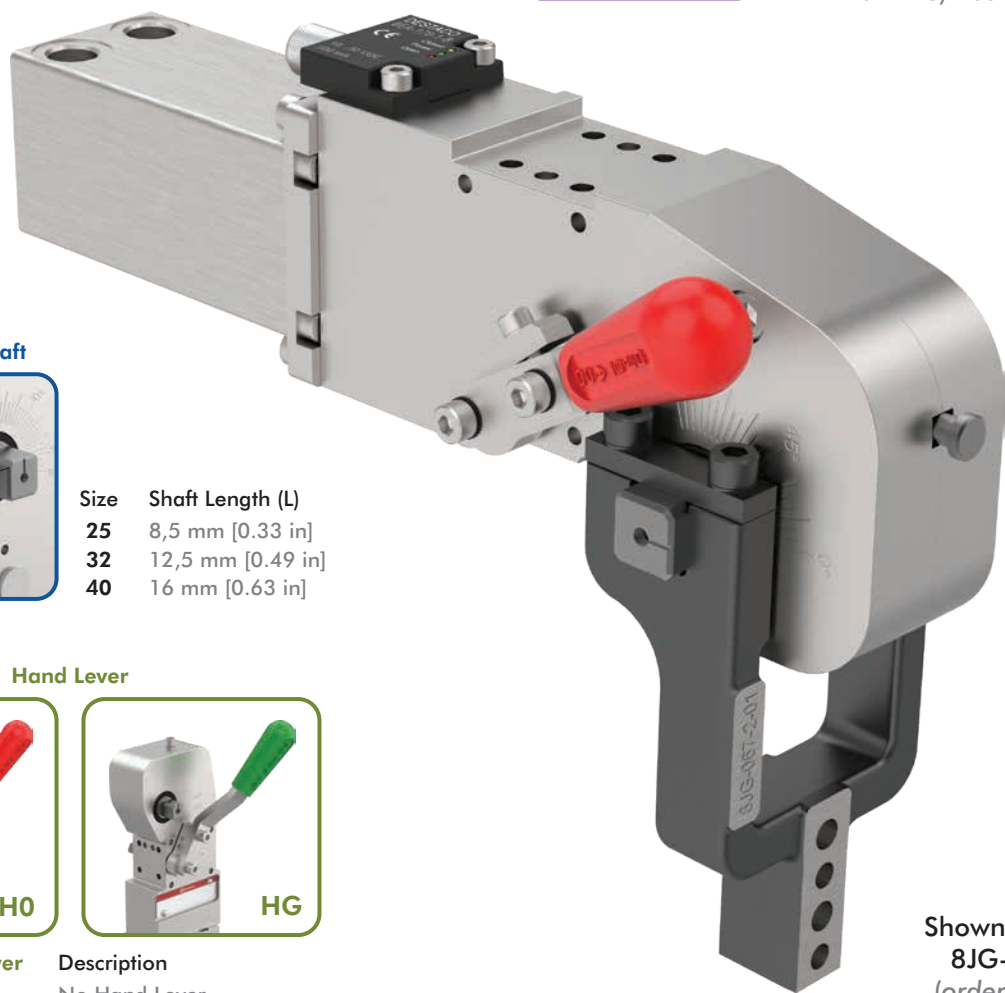
- 82L-3E
- 23
- H0
- 40
- B7

Clamp Arm Shaft
23
Description
for Arms
See below for further details

Hand Lever Description
00 No Hand lever
H0 Red Hand lever
HG Green Hand lever
See below for further details



- Cylinder (Standard)**
- 25** 25 mm Cylinder (G1/8 Port)
 - 2N** 25 mm Cylinder (1/8-18 NPT Port)
 - 32** 32 mm Cylinder (G1/8 Port)
 - 3N** 32 mm Cylinder (1/8-18 NPT Port)
 - 40** 40 mm Cylinder (G1/4 Port)
 - 4N** 40 mm Cylinder (1/4-18 NPT Port)



Size	Shaft Length (L)
25	8,5 mm [0.33 in]
32	12,5 mm [0.49 in]
40	16 mm [0.63 in]



Hand Lever Description
00 No Hand Lever
H0 Red Hand Lever
HG Green Hand Lever

Shown with U-Arm
8JG-067-2-01
(order separately)



CLICK OR SCAN
QR codes for
full catalog pages
on products

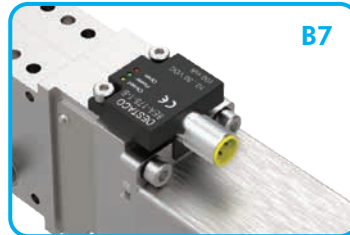
82L-3E

Enclosed Pneumatic Power Clamps | Lightweight Modular

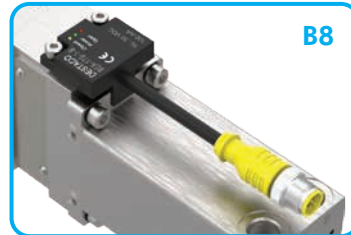
Sensor	Description
00	Without Sensing System
C8	Inductive Sensing System with In-Line M8x1 Connector (Size 25: 8EA-174-1-B, Size 32/40: 8EA-177-1-B)
B7	Inductive Sensing System with In-Line M12x1 Connector (Size 25: 8EA-175-1-B, Size 32/40: 8EA-178-1-B)
B8	Inductive Sensing System with M12x1 Connector with Cable (Size 25: 8EA-176-1-B, Size 32/40: 8EA-179-1-B)



C8



B7



B8



25/N

Max Holding Torque
75 Nm [55 ft-lb]
Max Clamping Torque
25 Nm [18 ft-lb]
at 5 bar [72 psi]

32/N

Max Holding Torque
180 Nm [133 ft-lb]
Max Clamping Torque
55 Nm [41 ft-lb]
at 5 bar [72 psi]

40/N

Max Holding Torque
380 Nm [280 ft-lb]
Max Clamping Torque
120 Nm [89 ft-lb]
at 5 bar [72 psi]

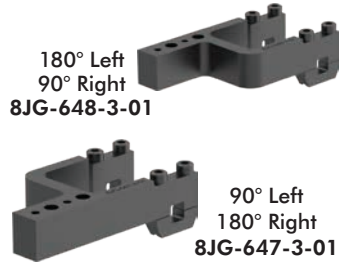
82L-3E ACCESSORIES

CLICK OR SCAN
QR codes for
full catalog pages
on products



Enclosed Pneumatic Power Clamps | Lightweight Modular

U-Type Offset Clamping Arms



Model	Order No. (1 clamp arm)
82L-3E....2.	8JG-647-3-01
82L-3E....2.	8JG-648-3-01

U-Type Central Clamping Arms



Model	Order No. (1 clamp arm)
82L-3E....2.	8JG-075-3-01
82L-3E....3.	8JG-065-2-01
82L-3E....4.	8JG-067-2-01

H- Clamping Arms



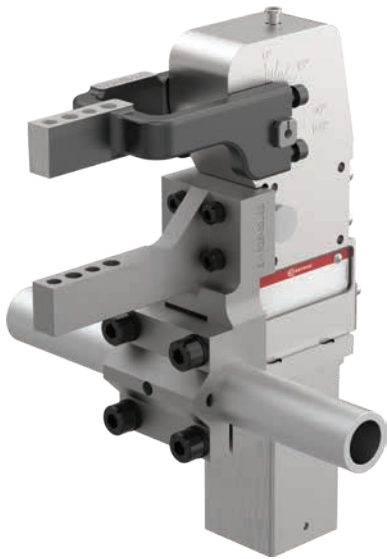
Model	Order No. (1 clamp arm)
82L-3E....3.	8JG-363-1-01
82L-3E....4.	8JG-364-1-01

Lateral Clamping Arms



Model	Order No. (1 clamp arm)
82L-3E....3.	8JG-066-1-01
82L-3E....4.	8JG-068-1-01

Counter-Support



Order No.	Fit for Model
BK-R25-82L25-1	82L-3E....2.
BK-R25-82L32-1	82L-3E....3.
BK-R25-82L40-1	82L-3E....4.

Hold Open Device



Order No.	Fit for Model
82ZB-036-1	82L-3E....2.
82ZB-037-1	82L-3E....3.
82ZB-038-1	82L-3E....4.



CLICK OR SCAN
QR codes for
full catalog pages
on products

82L-3E ACCESSORIES

Enclosed Pneumatic Power Clamps | Lightweight Modular

Clamping Arms	Order No. for Set 82L-3E23..2...	Order No. for Set 82L-3E23..3...	Order No. for Set 82L-3E23..4...						
U-Offset 90° Left/180° Right	8JG-647-3-01	--	--						
U-Offset 180° Left/90° Right	8JG-648-3-01	--	--						
U-central	8JG-075-3-01	8JG-065-2-01	8JG-067-2-01						
Lateral	--	8JG-066-1-01	8JG-068-1-01						
H-Shape	--	8JG-363-1-01	8JG-364-1-01						
Sensor Cables (1 Connector Socket & 5 m [16.4 ft] cable)									
Connector Socket M8x1 Straight 4-pin	8EL-009-1	8EL-009-1	8EL-009-1						
Connector Socket M8x1 Angular 4-pin	8EL-007-1	8EL-007-1	8EL-007-1						
Connector Socket M12x1 Straight 5-pin	8EL-002-1	8EL-002-1	8EL-002-1						
Connector Socket M12x1 Angular 4-pin	8EL-003-1	8EL-003-1	8EL-003-1						
Shim for Clamping Arm	Order No.	A1	A2	D2	D3	B9	B10	B12	L10
	82ZB-SH4001		[0.004] 0,1						
	82ZB-SH4002		[0.008] 0,2						
	82ZB-SH4005	[1.65] 42	[0.02] 0,5	[0.26] 6,5	[0.28] 7	[0.24] 6	[0.79] 20	[0.79] 20	[0.46] 11,8
	82ZB-SH4010		[0.04] 1,0						
	82ZB-SH4020		[0.08] 2,0						
	82ZB-SH4050		[0.20] 5,0						
Spare Parts	Order No. for Set		Order No. for Set		Order No. for Set				
	82L-3E23..25..	82L-3E23..2N..	82L-3E23..32..	82L-3E23..3N..	82L-3E23..40..	82L-3E23..4N..			
Cylinder	82L-3E000025	82L-3E00002N	82L-3E000032	82L-3E00003N	82L-3E000040	82L-3E00004N			
Sensor Kit									
C8 Connector Plug, with In-Line M8x1	8EA-174-1-B		8EA-177-1-B						
B7 Connector Plug, with In-Line M12x1	8EA-175-1-B		8EA-178-1-B						
B8 Connector Plug, M12x1 with Cable	8EA-176-1-B		8EA-179-1-B						
Spare Parts	Order No. for Set		Order No. for Set		Order No. for Set				
	82L-3E23H02...	82L-3E23HG2...	82L-3E23H03...	82L-3E23HG3...	82L-3E23H04...	82L-3E23HG4...			
Hand Lever	8KB-031-1	8KB-091-1	8KB-031-1	8KB-091-1	8KB-032-1	8KB-092-1			

TCC-2

Enclosed Pneumatic Power Clamps | Heavy-Duty, Tolerance Compensation

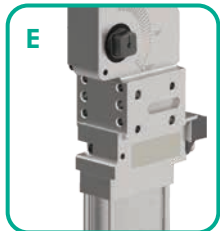
CLICK OR SCAN
QR codes for
full catalog pages
on products



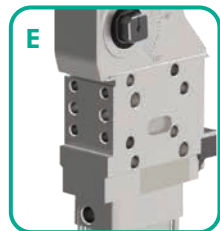
TCC-2 E 03 00 6A L8

Mounting	Description	Clamp Arm Shaft	Description	Handle	Description
E	Standard Mounting	03	for U-Arms	00	No Hand lever
B	Common Front Mount for Size 40 only (same mount pattern as size 50 & 63)	23	for Lateral Arms		
N	NAAMS Side Mounting for Size 63 only	See below for further details			

Mounting



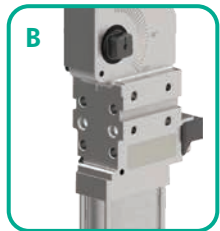
Size 40



Size 50



Size 63



Size 40 Only

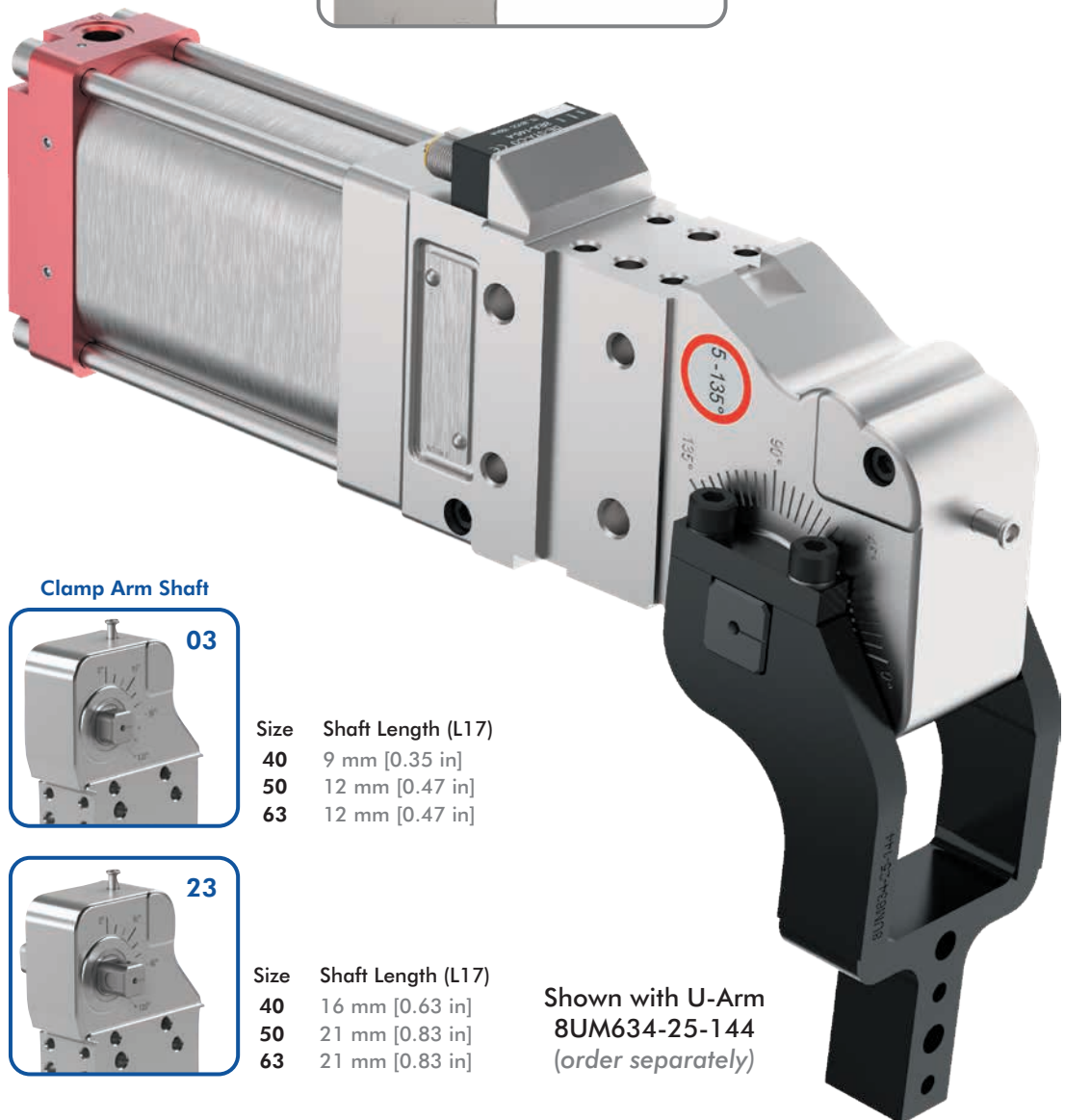


Size 63 Only



Tolerance compensation for variable part thicknesses

- Tolerance compensation for variable sheet metal thicknesses within three degrees of arm movement
- There is no need for shimming



Clamp Arm Shaft



03

Size	Shaft Length (L17)
40	9 mm [0.35 in]
50	12 mm [0.47 in]
63	12 mm [0.47 in]



23

Size	Shaft Length (L17)
40	16 mm [0.63 in]
50	21 mm [0.83 in]
63	21 mm [0.83 in]

Shown with U-Arm
8UM634-25-144
(order separately)



CLICK OR SCAN
QR codes for
full catalog pages
on products

Enclosed Pneumatic Power Clamps | Heavy-Duty, Tolerance Compensation

Sensor	Description
00	Without Sensing System
L8*	PNP Sensor with In-line M12x1 Connector (8EA-146-4-B)
N8*	NPN Sensor with In-line M12x1 Connector (8EA-154-4-B)
L9	PNP Sensor with 90° M12x1 Connector (8EA-147-4-B)
N9	NPN Sensor with 90° M12x1 Connector (8EA-155-4-B)
K8	PNP Sensor with M12x1 Cable Connector (8EA-158-4-B)
K9	NPN Sensor with M12x1 Cable Connector (8EA-167-4-B)

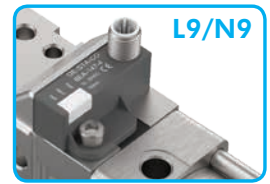
*Not available for use with 4V, 5V, 6V cylinder option.
See page 81 for replacement sensor kits and components.

Sensor Cables Order separately

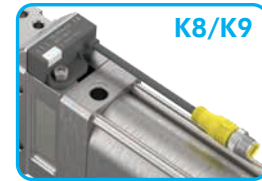
Order No.	Description
8EL-002-1	M12x1, Straight, 5-pin Connector with 5 m [16 ft] Cable
8EL-003-1	M12x1, Angular, 4-pin Connector with 5 m [16 ft] Cable



L8/N8



L9/N9



K8/K9



Cylinder (Standard)

- 40** 40 mm Cylinder (G1/8 Port)
- 50** 50 mm Cylinder (G1/4 Port)
- 5N** 50 mm Cylinder (1/4-18 NPT Port)
- 63** 63 mm Cylinder (G1/4 Port)
- 6N** 63 mm Cylinder (1/4-18 NPT Port)



Cylinder with Unlockable Return Valve

- 4C** 40 mm Cylinder (G1/8 Port)
- 5C** 50 mm Cylinder (G1/4 Port)
- 5D** 50 mm Cylinder (1/4-18 NPT Port)
- 6C** 63 mm Cylinder (G1/4 Port)
- 6D** 63 mm Cylinder (1/4-18 NPT Port)



Cylinder with Internal Hold Open Device

- 4A** 40 mm Cylinder (G1/8 Port)
- 5A** 50 mm Cylinder (G1/4 Port)
- 5B** 50 mm Cylinder (1/4-18 NPT Port)
- 6A** 63 mm Cylinder (G1/4 Port)
- 6B** 63 mm Cylinder (1/4-18 NPT Port)



Cylinder with Piston Rod Locking Device

- 4V** 40 mm Cylinder (G1/8 Port)
- 5V** 50 mm Cylinder (G1/4 Port)
- 6V** 63 mm Cylinder (G1/4 Port)



40

Max Holding/
Clamping Torque
85 Nm [62.7 ft-lb]
at 5 bar [72 psi]

50

Max Holding/
Clamping Torque
175 Nm [129 ft-lb]
at 5 bar [72 psi]

63

Max Holding/
Clamping Torque
295 Nm [217.6 ft-lb]
at 5 bar [72 psi]

82M-3

Enclosed Pneumatic Power Clamps | Heavy-Duty Modular

CLICK OR SCAN
QR codes for
full catalog pages
on products



82M-3 E 23 H0 50 L8

Mounting	Description
E	Standard Mounting
B	Common Front Mount for Size 40 only (same mount pattern as size 50 & 63)
N	NAAMS Side Mounting for Size 40 & 63 only

Clamp Arm Shaft	Description
03	for U-Arms
13	for U-Arms (required for 40 NAAMS N only)
23	for Lateral Arms
D0	for Lateral Arms (size 63 NAAMS N only)

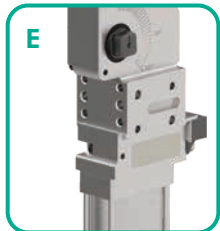
Handle	Description
00	No Hand lever
H0	Hand Lever
HS	Weldable

See below for further details

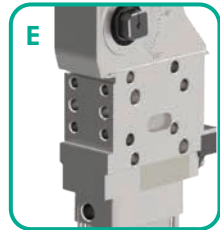
See below for further details

Shown with U-Arm
8UM504-25-144
(order separately)

Mounting



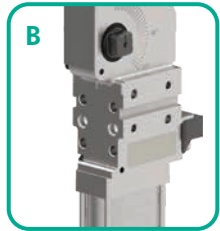
Size 40



Size 50



Size 63



Size 40 Only



Size 63 Only

Clamp Arm Shaft



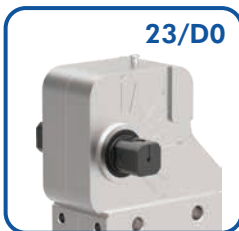
03

Size	Shaft Length (L17)
40	9 mm [0.35 in]
50	12 mm [0.47 in]
63	12 mm [0.47 in]



13

Size	Shaft Length
40	9 mm [0.35 in]



23/D0

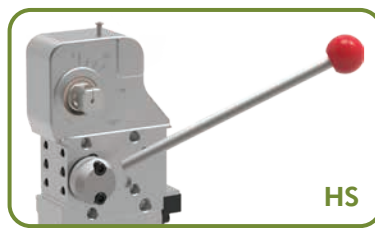
Size	Shaft Length (L17)
40	16 mm [0.63 in]
50	21 mm [0.83 in]
63	21 mm [0.83 in]
80	32 mm [1.26 in]

Size	Shaft Length (L17)
63	26 mm [1.02 in]

Hand Lever



H0



HS

Hand Lever	Description
00	No Hand Lever
H0	Standard Hand Lever (not compatible with cylinder options *A, *B)
HS	Weldable Hand Lever (not compatible with cylinder options *A, *B)

Replacement Hand Levers	Order No.
Standard	
82M-3E..H040..	8KB-097-1
82M-3E..H05...	8KB-098-1
82M-3E..H06..	8KB-099-1
82M-3E..H08..	8KB-100-1
Weldable	
82M-3E..HS40..	8KB-101-1
82M-3E..HS5...	8KB-102-1
82M-3E..HS6..	8KB-103-1
82M-3E..HS8..	8KB-104-1



CLICK OR SCAN
QR codes for
full catalog pages
on products

82M-3

Enclosed Pneumatic Power Clamps | Heavy-Duty Modular

Sensor	Description
00	Without Sensing System
L8	PNP Sensor with In-line M12x1 Connector (8EA-146-4-B)
N8	NPN Sensor with In-line M12x1 Connector (8EA-154-4-B)
L9	PNP Sensor with 90° M12x1 Connector (8EA-147-4-B)
N9	NPN Sensor with 90° M12x1 Connector (8EA-155-4-B)
K8	PNP Sensor with M12x1 Cable Connector (8EA-158-4-B)
K9	NPN Sensor with M12x1 Cable Connector (8EA-167-4-B)

See page 81 for replacement sensor kits and components.

Sensor Cables Order separately

Order No.	Description
8EL-002-1	M12x1, Straight, 5-pin Connector with 5 m [16 ft] Cable
8EL-003-1	M12x1, Angular, 4-pin Connector with 5 m [16 ft] Cable



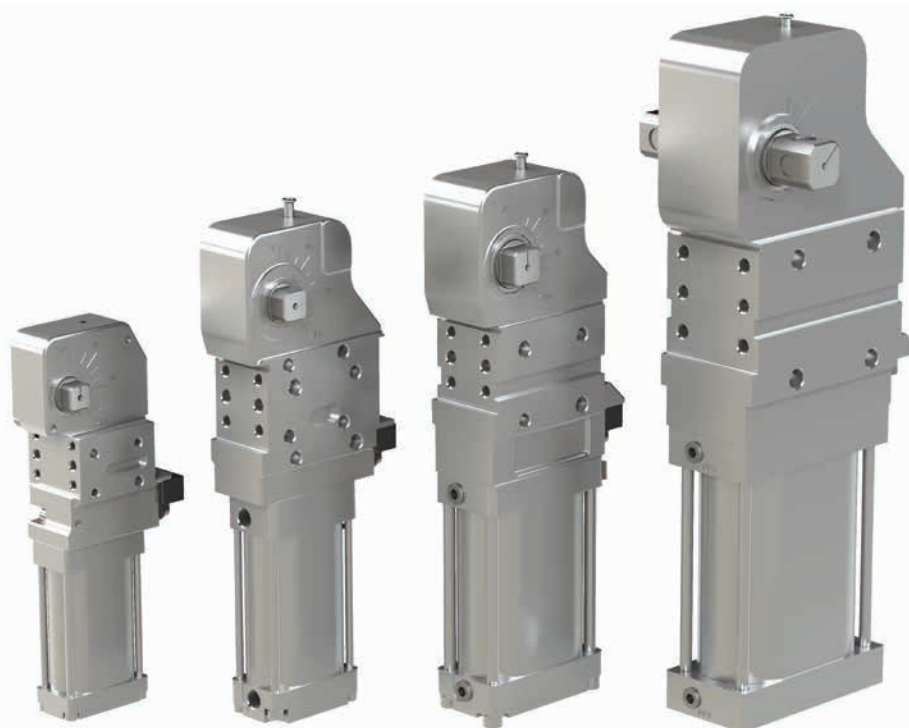
Cylinder - Standard

40	40 mm Cylinder (G1/8 Port)
50	50 mm Cylinder (G1/4 Port)
5N	50 mm Cylinder (1/4-18 NPT Port)
63	63 mm Cylinder (G1/4 Port)
6N	63 mm Cylinder (1/4-18 NPT Port)
80	80 mm Cylinder (G1/4 Port)
8N	80 mm Cylinder (1/4-18 NPT Port)



Cylinder with Internal Hold Open Device

4A	40 mm Cylinder (G1/8 Port)
5A	50 mm Cylinder (G1/4 Port)
5B	50 mm Cylinder (1/4-18 NPT Port)
6A	63 mm Cylinder (G1/4 Port)
6B	63 mm Cylinder (1/4-18 NPT Port)
8A	80 mm Cylinder (G1/4 Port)
8B	80 mm Cylinder (1/4-18 NPT Port)



40

Max Holding Torque
380 Nm [280 ft-lb]
Max Clamping Torque
120 Nm [89 ft-lb]
at 5 bar [72 psi]

50

Max Holding Torque
1300 Nm [959 ft-lb]
Max Clamping Torque
270 Nm [199 ft-lb]
at 5 bar [72 psi]

63

Max Holding Torque
1800 Nm [1328 ft-lb]
Max Clamping Torque
420 Nm [310 ft-lb]
at 5 bar [72 psi]

80

Max Holding Torque
3000 Nm [2213 ft-lb]
Max Clamping Torque
850 Nm [627 ft-lb]
at 5 bar [72 psi]

Locking Device for Hand Lever



Order No.	For Model
82ZB-162-1	82M-3E..H040..
82ZB-084-1	82M-3E..H05...
82ZB-039-1	82M-3E..H06...

Anti-Raming Device



Order No.	For Model
8AB-151-1	82M-3E...40..
8AB-152-1	82M-3E...5...
8AB-153-1	82M-3E...6...
8AB-154-1	82M-3E...8...

For models 82M-3E.....00
and 82M-3E.....L8 only.

Counter Support



Order No.	For Model
82ZB-190-1	82M-3N13..40..

52H-3

Enclosed Modular Manual Power Clamps | Heavy-Duty

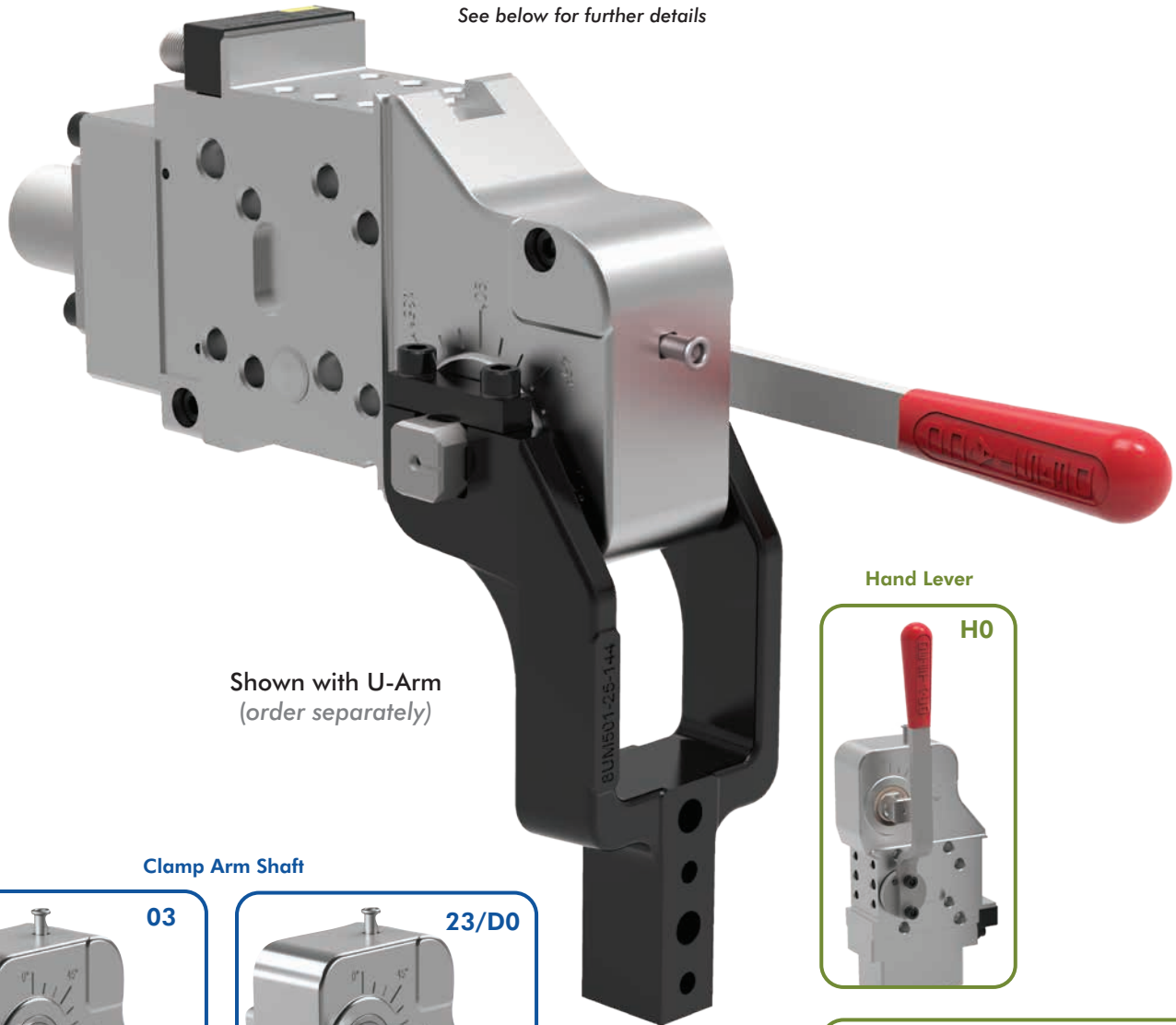
CLICK OR SCAN
QR codes for
full catalog pages
on products



52H-3 **E** **23** **H0** **50** **L8**

Mounting	Description	Clamp Arm Shaft	Description	Handle	Description
E	Standard	03	for U-Arms	H0	Hand lever
N	NAAMS (Size 63 only)	23	for Lateral Arms	HS	Hand Lever (Weldable)
		D0	for Lateral Arms (size 63 only)		

See below for further details



Shown with U-Arm
(order separately)

Clamp Arm Shaft



03

Size Shaft Length (L17)
50 12 mm [0.47 in]
63 12 mm [0.47 in]



23/D0

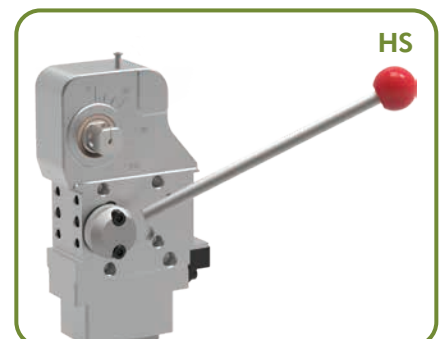
23
Size Shaft Length (L17)
50 21 mm [0.83 in]
63 21 mm [0.83 in]

D0
Size Shaft Length (L17)
D0 26 mm [1.02 in]

Hand Lever



H0



HS

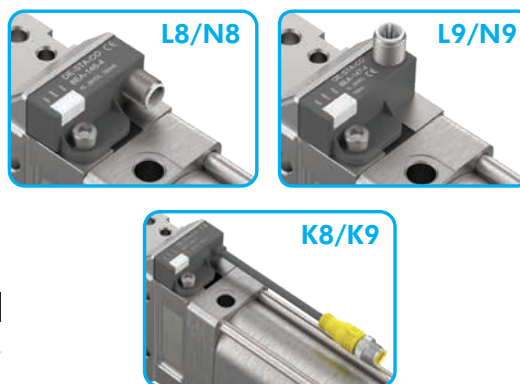


CLICK OR SCAN
QR codes for
full catalog pages
on products

Enclosed Modular Manual Power Clamps | Heavy-Duty

Sensor	Description
00	Without Sensing System
L8	PNP Sensor with In-line M12x1 Connector (8EA-146-4-B)
N8	NPN Sensor with In-line M12x1 Connector (8EA-154-4-B)
L9	PNP Sensor with 90° M12x1 Connector (8EA-147-4-B)
N9	NPN Sensor with 90° M12x1 Connector (8EA-155-4-B)
K8	PNP Sensor with M12x1 Cable Connector (8EA-158-4-B)
K9	NPN Sensor with M12x1 Cable Connector (8EA-167-4-B)

See page 81 for replacement sensor kits and components.

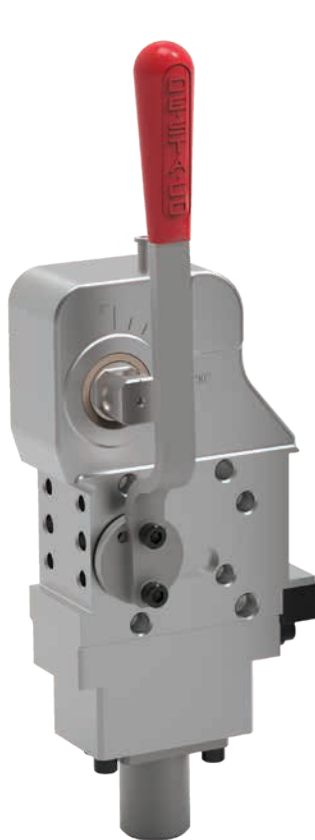


Order No.	Description
8EL-002-1	M12x1, Straight, 5-pin Connector with 5 m [16 ft] Cable
8EL-003-1	M12x1, Angular, 4-pin Connector with 5 m [16 ft] Cable

Size	Description
50	Size 50 mm
63	Size 63 mm



52H-3E..H.50/63
Modular manual
clamp, interchangeable
with 82M-3E...50/63



50

Max Holding Torque
1300 Nm [959 ft-lb]



63

Max Holding Torque
1800 Nm [1328 ft-lb]

Spare parts

Replacement	for Model	Order No.
Hand lever set	52H-3E...50	8KB-098-1
	52H-3E...63	8KB-099-1
Hand lever set (weldable)	52H-3E...50	8KB-102-1
	52H-3E...63	8KB-103-1

82M-3, 52H-3 CLAMP ARMS

Enclosed Modular Manual and Power Clamps

CLICK OR SCAN
QR codes for
full catalog pages
on products

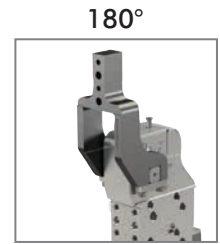


U-Arms Center (Aluminum)

Fits 82M-3E....40..	Max. Opening		Fits 82M-3....5... and 52H-3E....5...	Max. Opening		Fits 82M-3....8...	Max. Opening	
	for 90°	for 180°		for 90°	for 180°		for 90°	for 180°
8UM404-00-117		105°	8UM504-15-144		105°	8JG-169-2-01*		105°
8UM404-15-117	135°	120°	8UM504-25-144	135°	120°	8UM801-45-204*	135°	135°
8UM404-25-117		135°	8UM504-45-144		135°			
8UM404-45-107	130°							



Fits 82M-3N13..40..	Max. Opening		Fits 82M-3....6... and 52H-3E....6...	Max. Opening	
	for 90°	for 180°		for 90°	for 180°
8UM408-00-117*		105°	8UM634-15-144		105°
8UM408-15-117*	135°	120°	8UM634-25-144	135°	120°
8UM408-25-117*		135°	8UM634-45-144		135°
8UM408-45-117*	130°		8UM631-75-204*		135°

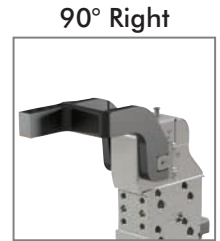
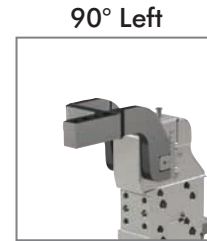


* only steel version available.

U-Arms Offset (Aluminum)

(•) = **L** for Left, **R** for Right

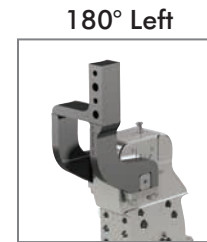
Fits 82M-3E....40..	Max. Opening		Fits 82M-3....5... and 52H-3E....5...	Max. Opening	
	for 90°	for 180°		for 90°	for 180°
8U(•)404-00-117		105°	8U(•)504-15-144		105°
8U(•)404-15-117	135°	120°	8U(•)504-25-144	135°	120°
8U(•)404-25-117		135°	8U(•)504-45-144		135°
8U(•)404-45-107	130°				



8UL...
8JG-170-2-01

8UR...
8JG-171-2-01

Fits 82M-3....6... and 52H-3E....6...	Max. Opening		Fits 82M-3....8...	Max. Opening	
	for 90°	for 180°		for 90°	for 180°
8U(•)634-15-144		105°	8JG-17(•)-2-01*	135°	105°
8U(•)634-25-144	135°	120°	(•) = 0 for Left, 1 for Right		
8U(•)634-45-144		135°			
8U(•)631-75-204*					



8UR...
8JG-171-2-01

8UL...
8JG-170-2-01

Note: 180° left uses same clamp arm as 90° right.
180° right uses same clamp arm as 90° left.

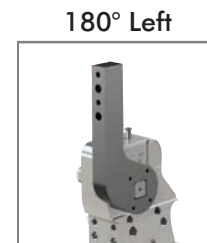
* only steel version available.

Lateral (Steel)

Fits 82M-3E....40..	Max. Opening		Fits 82M-3....5... and 52H-3E....5...	Max. Opening	
	for 90°	for 180°		for 90°	for 180°
8S401-15-117	135°	120°	8JG-070-1-01	135°	135°
			8S501-25-144		



Fits 82M-3....6... and 52H-3E....6...	Max. Opening		Fits 82M-3....8...	Max. Opening	
	for 90°	for 180°		for 90°	for 180°
8JG-080-1-01			8JG-1179-1-01	135°	135°
8S631-25-144	135°	135°	8S801-45-204		
8S631-45-144					
8S631-75-204					



Models with 2 lateral clamp arms requires 2 clamp arm sets.



CLICK OR SCAN
QR codes for
full catalog pages
on products

82M-3, 52H-3 CLAMP ARMS

Enclosed Modular Manual and Power Clamps

Lateral Arms (NAAMS-Style) for 82M-3E and 52H-3E 50mm

9mm Thru Hole (6.00 H7 Dowel)

90mm [3.54"] Arm Length

Series	Arm Style	Model
50 Offset	▲ • 3256	B8JG-3256-1
25 Offset	▲ • 3246	B8JG-3246-1
0 Offset	▲ • 3236	B8JG-3236-1

120mm [4.72"] Arm Length

Series	Arm Style	Model
50 Offset	▲ • 3257	B8JG-3257-1
25 Offset	▲ • 3247	B8JG-3247-1
0 Offset	▲ • 3237	B8JG-3237-1

150mm [5.90"] Arm Length

Series	Arm Style	Model
50 Offset	▲ • 3258	B8JG-3258-1
25 Offset	▲ • 3248	B8JG-3248-1
0 Offset	▲ • 3238	B8JG-3238-1

11mm Thru Hole (8.00 F7 Dowel)

90mm [3.54"] Arm Length

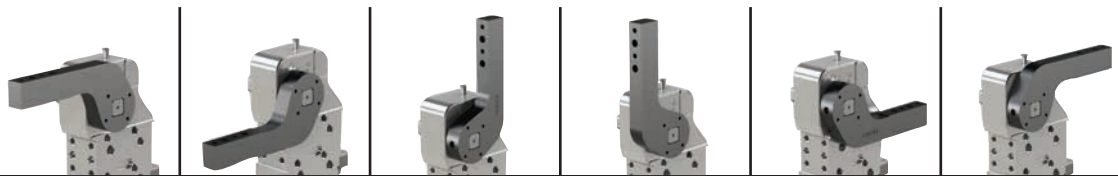
Series	Arm Style	Model
50 Offset	▲ • 1226	B8JG-1226-1
25 Offset	▲ • 1216	B8JG-1216-1
0 Offset	▲ • 1206	B8JG-1206-1

120mm [4.72"] Arm Length

Series	Arm Style	Model
50 Offset	▲ • 1227	B8JG-1227-1
25 Offset	▲ • 1217	B8JG-1217-1
0 Offset	▲ • 1207	B8JG-1207-1

150mm [5.90"] Arm Length

Series	Arm Style	Model
50 Offset	▲ • 1228	B8JG-1228-1
25 Offset	▲ • 1218	B8JG-1218-1
0 Offset	▲ • 1208	B8JG-1208-1



Arm Styles	Maximum Opening Angle (shown in locked position)					
1206-1208/3236-3238	135°	135°	100°	100°	N/A	N/A
1216-1218/3246-3248	135°	N/A	50°	125°	N/A	30°
1226-1228/3256-3258	125°	N/A	35°	135°	N/A	50°

Lateral Arms (NAAMS-Style) for 82M-3. and 52H-3E 63mm for 23 Clamp Arm Shaft Option

9mm Thru Hole (6.00 H7 Dowel)

135mm [5.31"] Arm Length

Series	Arm Style	Model
120 Offset	▲ 1543	B8JG-1543-1
70 Offset	▲ 1531	B8JG-1531-1
25 Offset	▲ 1519	B8JG-1519-1
0 Offset	▲ 1507	B8JG-1507-1

165mm [6.50"] Arm Length

Series	Arm Style	Model
120 Offset	▲ 1544	B8JG-1544-1
70 Offset	▲ 1532	B8JG-1532-1
25 Offset	▲ 1520	B8JG-1520-1
0 Offset	▲ 1508	B8JG-1508-1

195mm [7.68"] Arm Length

Series	Arm Style	Model
120 Offset	▲ 1545	B8JG-1545-1
70 Offset	▲ 1533	B8JG-1533-1
25 Offset	▲ 1521	B8JG-1521-1
0 Offset	▲ 1509	B8JG-1509-1

225mm [8.86"] Arm Length

Series	Arm Style	Model
120 Offset	▲ 1546	B8JG-1546-1
70 Offset	▲ 1534	B8JG-1534-1
25 Offset	▲ 1522	B8JG-1522-1
0 Offset	▲ 1510	B8JG-1510-1

255mm [10.04"] Arm Length

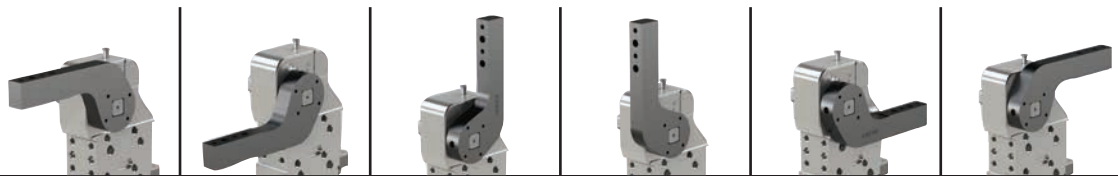
Series	Arm Style	Model
120 Offset	▲ 1547	B8JG-1547-1
70 Offset	▲ 1535	B8JG-1535-1
25 Offset	▲ 1523	B8JG-1523-1
0 Offset	▲ 1511	B8JG-1511-1

285mm [11.22"] Arm Length

Series	Arm Style	Model
120 Offset	▲ 1548	B8JG-1548-1
70 Offset	▲ 1536	B8JG-1536-1
25 Offset	▲ 1524	B8JG-1524-1
0 Offset	▲ 1512	B8JG-1512-1

▲ Common in North America

(•) STANDARD ARM OFFERING



Arm Styles	Maximum Opening Angle (shown in locked position)					
1510-1512/1507-1509	135°	135°	100°	100°	N/A	N/A
1522-1524/1519-1521	135°	N/A	50°	130°	N/A	40°
1534-1536/1531-1533	115°	N/A	25°	135°	N/A	75°
1546-1548/1543-1545	110°	N/A	20°	135°	N/A	85°

▲ Common in North America

(•) STANDARD ARM OFFERING

82M-3, 52H-3 CLAMP ARMS

CLICK OR SCAN
QR codes for
full catalog pages
on products



Enclosed Modular Manual and Power Clamps

Lateral Arms (NAAMS-Style) for 82M-3. and 52H-3E. 63mm for D0 Clamp Arm Shaft Option

11mm Thru Hole (8.00 F7 Dowel)

135mm [5.31"] Arm Length			165mm [6.50"] Arm Length			195mm [7.68"] Arm Length		
Series	Arm Style	Model	Series	Arm Style	Model	Series	Arm Style	Model
120 Offset	▲ • 1043	B8JG-1043-1	120 Offset	▲ ⓘ 1044	B8JG-1044-1	120 Offset	▲ ⓘ 1045	B8JG-1045-1
70 Offset	▲ • 1031	B8JG-1031-1	70 Offset	▲ • 1032	B8JG-1032-1	70 Offset	▲ • 1033	B8JG-1033-1
25 Offset	▲ • 1019	B8JG-1019-1	25 Offset	▲ • 1020	B8JG-1020-1	25 Offset	▲ ⓘ 1021	B8JG-1021-1
0 Offset	▲ • 1007	B8JG-1007-1	0 Offset	▲ • 1008	B8JG-1008-1	0 Offset	▲ • 1009	B8JG-1009-1

225mm [8.86"] Arm Length			255mm [10.04"] Arm Length			285mm [11.22"] Arm Length		
Series	Arm Style	Model	Series	Arm Style	Model	Series	Arm Style	Model
120 Offset	▲ ⓘ 1046	B8JG-1046-1	120 Offset	▲ ⓘ 1047	B8JG-1047-1	120 Offset	▲ ⓘ 1048	B8JG-1048-1
70 Offset	▲ • 1034	B8JG-1034-1	70 Offset	▲ • 1035	B8JG-1035-1	70 Offset	▲ ⓘ 1036	B8JG-1036-1
25 Offset	▲ ⓘ 1022	B8JG-1022-1	25 Offset	▲ ⓘ 1023	B8JG-1023-1	25 Offset	▲ ⓘ 1024	B8JG-1024-1
0 Offset	▲ ⓘ 1010	B8JG-1010-1	0 Offset	▲ ⓘ 1011	B8JG-1011-1	0 Offset	▲ ⓘ 1012	B8JG-1012-1

Arm Styles	Maximum Opening Angle (shown in locked position)					
1010-1012/1007-1009	135°	135°	100°	100°	N/A	N/A
1022-1024/1019-1021	135°	N/A	50°	130°	N/A	40°
1034-1036/1031-1033	115°	N/A	25°	135°	N/A	75°
1046-1048/1043-1045	110°	N/A	20°	135°	N/A	85°

Lateral Arms (NAAMS-Style) for 82M-3E 80mm

11mm Thru Hole (8.00 F7 Dowel)

155mm [6.10"] Arm Length			185mm [7.28"] Arm Length			215mm [8.46"] Arm Length		
Series	Arm Style	Model	Series	Arm Style	Model	Series	Arm Style	Model
120 Offset	▲ ⓘ 1170	B8JG-1170-1	120 Offset	▲ ⓘ 1171	B8JG-1171-1	120 Offset	▲ ⓘ 1172	B8JG-1172-1
70 Offset	▲ • 1150	B8JG-1150-1	70 Offset	▲ ⓘ 1151	B8JG-1151-1	70 Offset	▲ ⓘ 1152	B8JG-1152-1
25 Offset	▲ ⓘ 1130	B8JG-1130-1	25 Offset	▲ ⓘ 1131	B8JG-1131-1	25 Offset	▲ ⓘ 1132	B8JG-1132-1
0 Offset	▲ ⓘ 1110	B8JG-1110-1	0 Offset	▲ ⓘ 1111	B8JG-1111-1	0 Offset	▲ • 1112	B8JG-1112-1

245mm [9.65"] Arm Length			275mm [10.83"] Arm Length			305mm [12.00"] Arm Length		
Series	Arm Style	Model	Series	Arm Style	Model	Series	Arm Style	Model
120 Offset	▲ ⓘ 1173	B8JG-1173-1	120 Offset	▲ ⓘ 1174	B8JG-1174-1	120 Offset	▲ ⓘ 1175	B8JG-1175-1
70 Offset	▲ ⓘ 1153	B8JG-1153-1	70 Offset	▲ ⓘ 1154	B8JG-1154-1	70 Offset	▲ • 1155	B8JG-1155-1
25 Offset	▲ ⓘ 1133	B8JG-1133-1	25 Offset	▲ • 1134	B8JG-1134-1	25 Offset	▲ ⓘ 1135	B8JG-1135-1
0 Offset	▲ ⓘ 1113	B8JG-1113-1	0 Offset	▲ ⓘ 1114	B8JG-1114-1	0 Offset	▲ ⓘ 1115	B8JG-1115-1

335mm [13.19"] Arm Length			365mm [14.37"] Arm Length			395mm [15.55"] Arm Length		
Series	Arm Style	Model	Series	Arm Style	Model	Series	Arm Style	Model
120 Offset	▲ ⓘ 1176	B8JG-1176-1	120 Offset	▲ ⓘ 1177	B8JG-1177-1	120 Offset	▲ ⓘ 1178	B8JG-1178-1
70 Offset	▲ ⓘ 1156	B8JG-1156-1	70 Offset	▲ ⓘ 1157	B8JG-1157-1	70 Offset	▲ • 1158	B8JG-1158-1
25 Offset	▲ ⓘ 1136	B8JG-1136-1	25 Offset	▲ ⓘ 1137	B8JG-1137-1	25 Offset	▲ ⓘ 1138	B8JG-1138-1
0 Offset	▲ ⓘ 1116	B8JG-1116-1	0 Offset	▲ ⓘ 1117	B8JG-1117-1	0 Offset	▲ • 1118	B8JG-1118-1

Arm Styles	Maximum Opening Angle (shown in locked position)					
1110 - 1118	135°	135°	100°	100°	N/A	N/A
1130 - 1138	135°	N/A	60°	120°	N/A	30°
1150 - 1158	125°	N/A	35°	135°	N/A	55°
1170 - 1178	115°	N/A	25°	135°	N/A	80°

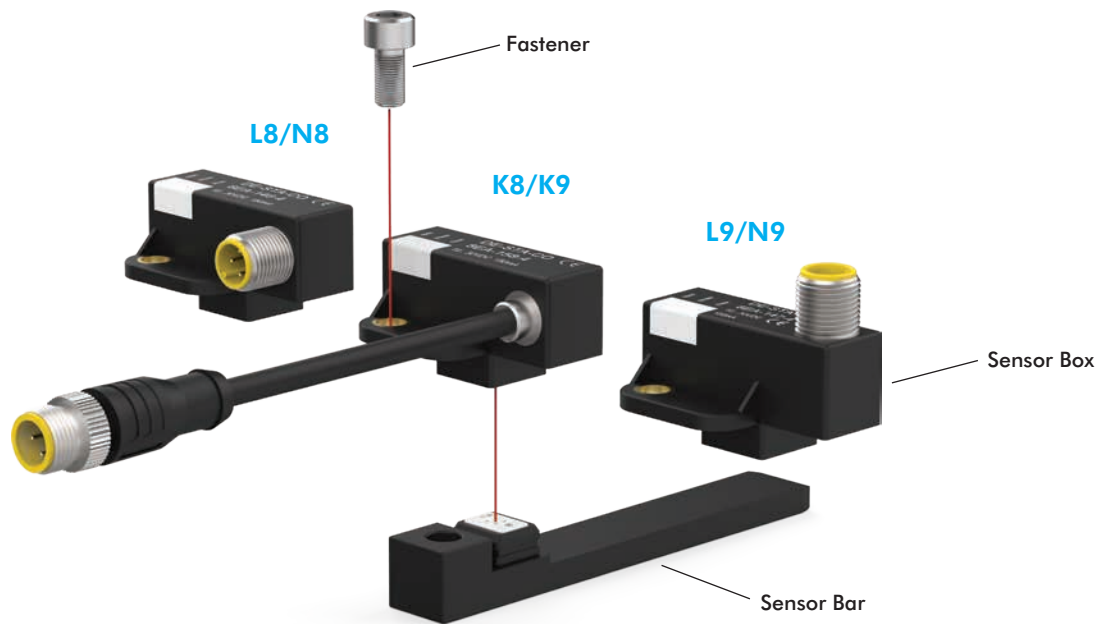
▲ Common in North America

(•) STANDARD ARM OFFERING

ⓘ NON-STANDARD ARM OFFERING (extended leadtimes apply)

TCC-2, 82M-3, 52H-3 SENSORS

Replacement Sensor Kits and Components



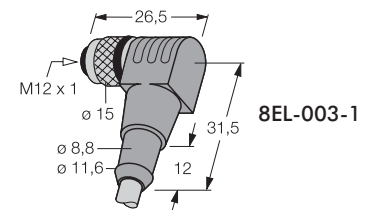
Complete Sensor Kits
(Includes Sensor Box, Sensor Bar, Screw)

Component Part No.

Fits Base Models	Order No.	Description	Replacement Kit	Sensor Box	Sensor Bar	Fastener
TCC-2.....4.	L8	PNP w/In-line M12x1 Connector	8EA-146-4-B-03	8EA-146-4-B	8EA-168-4-G	M6X12-912-ZN
	N8	NPN w/In-line M12x1 Connector	8EA-154-4-B-03	8EA-154-4-B		
	L9	PNP w/90° M12x1 Connector	8EA-147-4-B-03	8EA-147-4-B		
	N9	NPN w/90° M12x1 Connector	8EA-155-4-B-03	8EA-155-4-B		
	K8	PNP w/M12x1 Cable Connector	8EA-158-4-B-03	8EA-158-4-B		
	K9	NPN w/M12x1 Cable Connector	8EA-167-4-B-03	8EA-167-4-B		
TCC-2.....5., 6. 82M-3.....4., 5., 6. 52H-3.....50, 63	L8	PNP w/In-line M12x1 Connector	8EA-146-4-B-01	8EA-146-4-B	8EA-148-4-G	M6X12-912-ZN
	N8	NPN w/In-line M12x1 Connector	8EA-154-4-B-01	8EA-154-4-B		
	L9	PNP w/90° M12x1 Connector	8EA-147-4-B-01	8EA-147-4-B		
	N9	NPN w/90° M12x1 Connector	8EA-155-4-B-01	8EA-155-4-B		
	K8	PNP w/M12x1 Cable Connector	8EA-158-4-B-01	8EA-158-4-B		
	K9	NPN w/M12x1 Cable Connector	8EA-167-4-B-01	8EA-167-4-B		
82M-3.....8.	L8	PNP w/In-line M12x1 Connector	8EA-146-4-B-02	8EA-146-4-B	8EA-149-4-G	M6X12-912-ZN
	N8	NPN w/In-line M12x1 Connector	8EA-154-4-B-02	8EA-154-4-B		
	L9	PNP w/90° M12x1 Connector	8EA-147-4-B-02	8EA-147-4-B		
	N9	NPN w/90° M12x1 Connector	8EA-155-4-B-02	8EA-155-4-B		
	K8	PNP w/M12x1 Cable Connector	8EA-158-4-B-02	8EA-158-4-B		
	K9	NPN w/M12x1 Cable Connector	8EA-167-4-B-02	8EA-167-4-B		

Sensor Cables Order separately

Order No.	Description
8EL-002-1	M12x1, Straight, 5-pin Connector with 5 m [16 ft] Cable
8EL-003-1	M12x1, Angular, 4-pin Connector with 5 m [16 ft] Cable



870-2, 871-2

Pneumatic Power Clamps

CLICK OR SCAN
QR codes for
full catalog pages
on products



870-2

Base Model	Description
870-2	38,1 mm [1.5 in.] Cylinder with Vertical Clamp Arm
871-2	38,1 mm [1.5 in.] Cylinder with Horizontal Clamp Arm

Sensors

BIM-IKE-AP

810151

810153

810155

810157

Description (order separately)

Magnetic Sensor, 2 pieces required

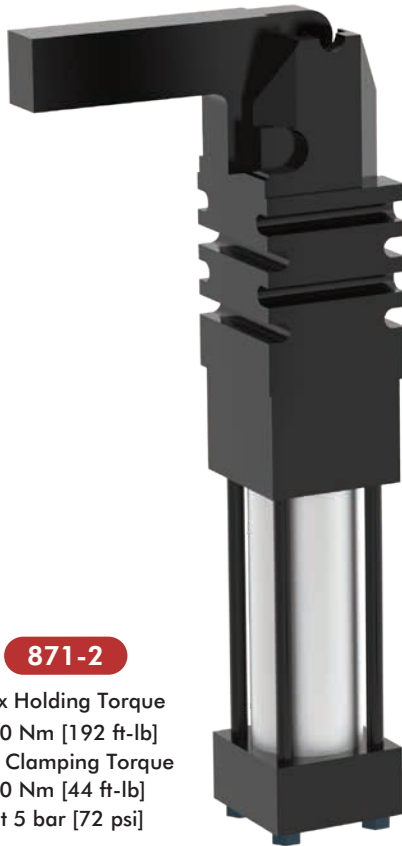
Magnetic Sensor, 2 pieces required

Magnetic Sensor, 2 pieces required

Magnetic Sensor, 2 pieces required

Magnetic Sensor, 2 pieces required

See below for sensor specifications.



871-2

Max Holding Torque
260 Nm [192 ft-lb]
Max Clamping Torque
60 Nm [44 ft-lb]
at 5 bar [72 psi]



870-2

Max Holding Torque
260 Nm [192 ft-lb]
Max Clamping Torque
60 Nm [44 ft-lb]
at 5 bar [72 psi]

Sensors

Order separately (2 pieces required)

Order No.	Mount Style	Connector	Length	Function	Voltage	Max. Switching Current	Voltage Drop
BIM-IKE-AP	Tie Rod	No connector cord	2m [6.6 ft.]	PNP	10-30 V DC	200 mA	2.3V
810151			2.7m [9ft.]	Reed	5-120 V AC/DC	500 mA	3.5V
810153				Reed	24-240 V AC	4 A	1.0V
810155				PNP	6-24 V DC	500 mA	1.0V
810157				NPN	6-24 V DC	500 mA	1.0V



CLICK OR SCAN
QR codes for
full catalog pages
on products

860, 861, 890, 891, 1000, 1001

Pneumatic Power Clamps

860

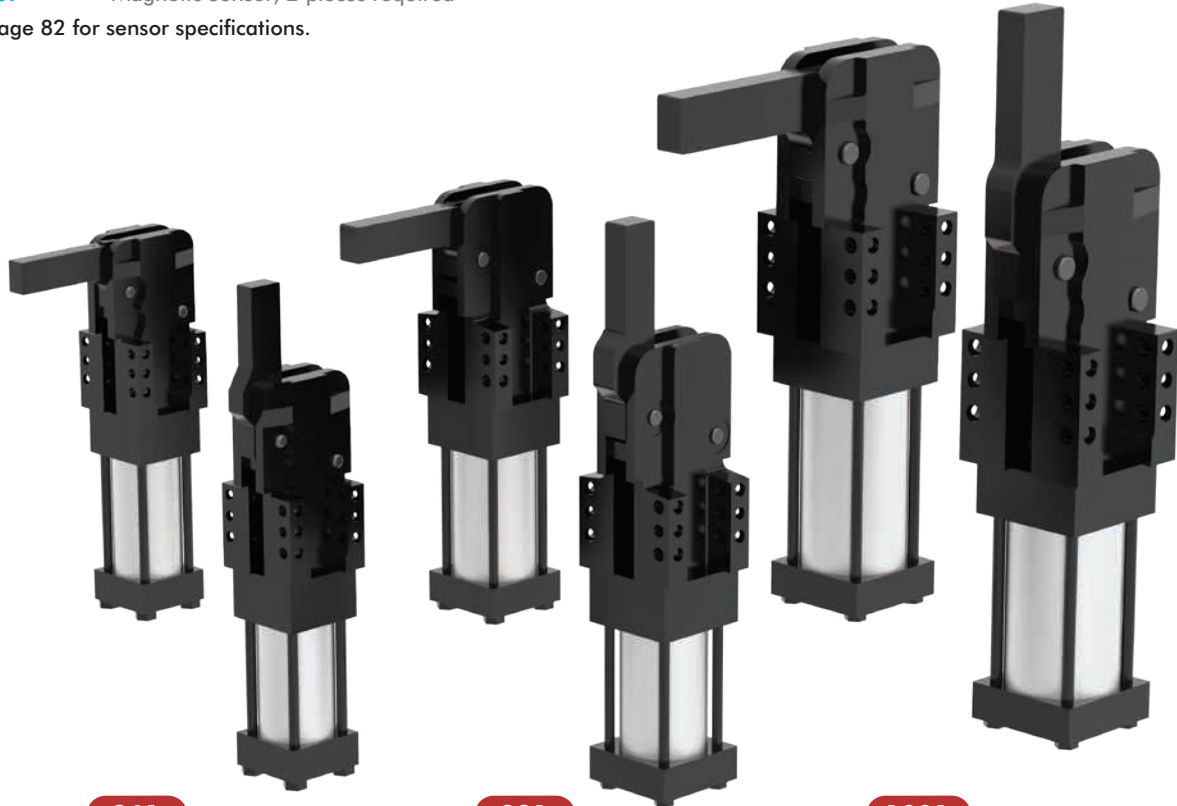
Base Model	Description
860	50,8 mm [2 in.] Cylinder with Vertical Clamp Arm
861	50,8 mm [2 in.] Cylinder with Horizontal Clamp Arm
890	63,5 mm [2.5 in.] Cylinder with Vertical Clamp Arm
891	63,5 mm [2.5 in.] Cylinder with Horizontal Clamp Arm
1000	82,5 mm [3.25 in.] Cylinder with Vertical Clamp Arm
1001	82,5 mm [3.25 in.] Cylinder with Horizontal Clamp Arm

Sensors	Description (order separately)
BIM-IKE-AP	Magnetic Sensor, 2 pieces required
810151	Magnetic Sensor, 2 pieces required
810153	Magnetic Sensor, 2 pieces required
810155	Magnetic Sensor, 2 pieces required
810157	Magnetic Sensor, 2 pieces required

See page 82 for sensor specifications.

Seal Kit	Description (order separately)
8610100	Seal Kit for Model 860, 861
8910100	Seal Kit for Model 890, 891
10010100	Seal Kit for Model 1000, 1001

Cylinder	Description (order separately)
865133-MR	Replacement Cylinder for Model 860
865132-MR	Replacement Cylinder for Model 861
895133-MR	Replacement Cylinder for Model 890
895132-MR	Replacement Cylinder for Model 891
1005134-MR	Replacement Cylinder for Model 1000
1005133-MR	Replacement Cylinder for Model 1001



861

Max Holding Torque
380 Nm [280 ft-lb]
Max Clamping Torque
120 Nm [89 ft-lb]
at 5 bar [72 psi]

891

Max Holding Torque
1300 Nm [959 ft-lb]
Max Clamping Torque
270 Nm [199 ft-lb]
at 5 bar [72 psi]

1001

Max Holding Torque
1800 Nm [1328 ft-lb]
Max Clamping Torque
420 Nm [310 ft-lb]
at 5 bar [72 psi]

860

Max Holding Torque
380 Nm [280 ft-lb]
Max Clamping Torque
120 Nm [89 ft-lb]
at 5 bar [72 psi]

890

Max Holding Torque
1300 Nm [959 ft-lb]
Max Clamping Torque
270 Nm [199 ft-lb]
at 5 bar [72 psi]

1000

Max Holding Torque
1800 Nm [1328 ft-lb]
Max Clamping Torque
420 Nm [310 ft-lb]
at 5 bar [72 psi]

82D40, 82D63

Enclosed Pneumatic Power Clamps | Dual Arm

CLICK OR SCAN
QR codes for
full catalog pages
on products



Base Model

Base Model	Description
82D40-2	40 mm Cylinder (G1/4 Port)
82D63-5	63 mm Cylinder (G1/4 Port)

Hand Lever

Hand Lever	Description
0	Hand Lever not available

Clamp Arms

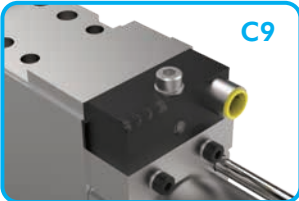
Clamp Arms	Description
B	Base model only. Order clamps arms separately.

Clamp Arm Shaft

Clamp Arm Shaft	Description
23	includes long drive shaft ends on both sides fit for all clamping arms (standard)

Sensor

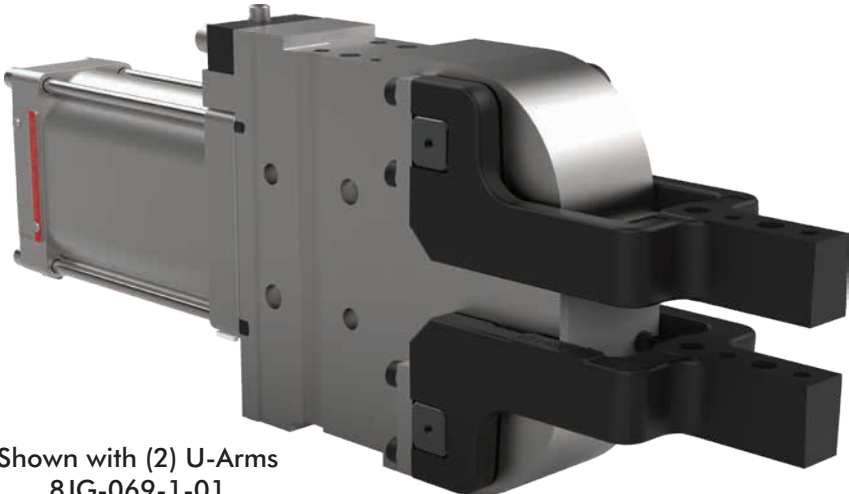
Sensor	Description
C9	includes Sensing System with M12x1 Connector (8EA-024-2) Standard




Opening Angle

Opening Angle	Opening Angle
0	180° (standard)
1	160°
2	140°
3	120°
4	100°
5	80°
6	60°
7	40°
8	20°


Reduced opening angles available upon request.



Shown with (2) U-Arms
8JG-069-1-01
(order separately)



82D63-5
Max Holding
400 Nm [295 ft-lb]
Max Clamping Torque
120 Nm [88 ft-lb]
at 5 bar [72 psi]

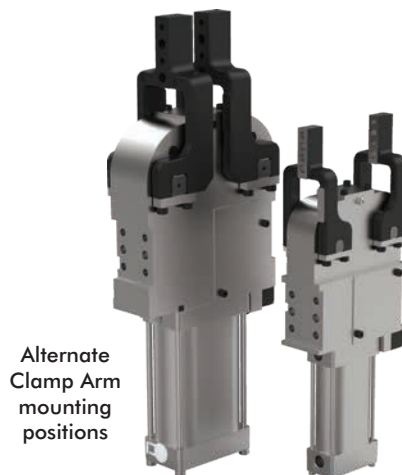


82D40-2
Max Holding
140 Nm [103 ft-lb]
Max Clamping Torque
60 Nm [44 ft-lb]
at 5 bar [72 psi]

U-type Central Clamping Arm



Model	Order No. (1 clamp arm)
82D40-223C900B	8JG-065-2-01
82D63-523C900B	8JG-069-1-01



Lateral Clamping Arm

Clamp Arm Variants
Left Side, Right Side, Both Sides



Model	Order No. (1 clamp arm)
82D40-223C900B	8JG-066-1-01
82D63-523C900B	8JG-070-1-01



CLICK OR SCAN
QR codes for
full catalog pages
on products

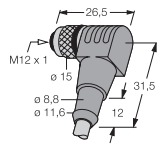
82D ACCESSORIES

Enclosed Pneumatic Power Clamps | Dual Arm

Clamping Arms		Order No. for Set		Comment
Clamping are variant	Clamping position	82D40-223C900B	82D63-523C900B	
U-central	vertical	8JG-065-1-01	8JG-069-1-01	sets of U-type clamping arms consist of clamping arm, links and screws you need 2 sets of clamping arms
lateral right/left	vertical	8JG-066-1-01¹⁾	8JG-070-1-01²⁾	sets of lateral clamping arms consist of 1) clamping arm, links and screws 2) clamping arm and set screws you need 2 sets of clamping arms
lateral both sides	vertical	8JG-066-1-01¹⁾	8JG-070-1-01²⁾	you need 4 sets of clamping arms



Connector socket
M12x1 straight, 5-pin



Connector socket
M12x1 angular, 4-pin

Sensor Cables (Order Separately)	
Order No.	Description
8EL-002-1	M12x1, Straight, 5-Pin Connector with 5 m [16 ft] Cable
8EL-003-1	M12x1, Angular, 4-Pin Connector with 5 m [16 ft] Cable

Opening Angle Limiter	Fit for Model 82D40-2...		Fit for Model 82D63-5...		
	Angle	Length	Order No.	Length	Order No.
180° (Standard)		11,4 mm	8CE-342-1	14,4 mm	8CE-362-1
160°		15,1 mm	8CE-340-1	20,0 mm	8CE-360-1
140°		18,5 mm	8CE-338-1	24,8 mm	8CE-358-1
120°		22,2 mm	8CE-336-1	29,6 mm	8CE-356-1
100°		25,8 mm	8CE-334-1	34,3 mm	8CE-354-1
80°		28,0 mm	8CE-332-1	39,0 mm	8CE-352-1
60°		33,0 mm	8CE-330-1	43,8 mm	8CE-350-1
40°		37,0 mm	8CE-328-1	49,1 mm	8CE-348-1
20°		41,8 mm	8CE-326-1	56,2 mm	8CE-346-1

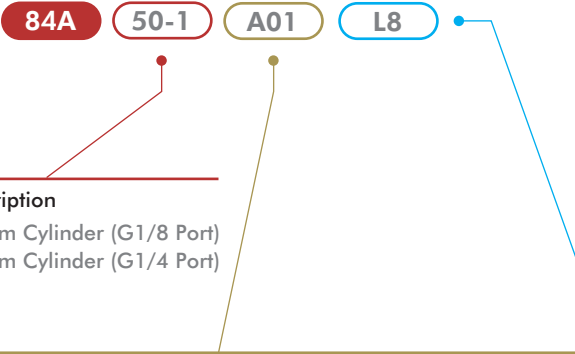
Shim Plates (for clamping arm)	Fit for model 82D40-2								Fit for model 82D63-5									
	Order No.	A1	A2	D2	D3	B9	B10	B12	L10	Order No.	A1	A2	D2	D3	B9	B10	B12	L10
	82ZB-SH4001		0,1							82ZB-SH5001		0,1						
	82ZB-SH4002		0,2							82ZB-SH5002		0,2						
	82ZB-SH4005	42	0,5	6,5	7	6	20	20	12	82ZB-SH5005	65	0,5	6,5	9	10	30	30	15,8
	82ZB-SH4010		1,0							82ZB-SH5010		1,0						
	82ZB-SH4020		2,0							82ZB-SH5020		2,0						
	82ZB-SH4050		5,0							82ZB-SH5050		5,0						

Spare Parts	Order No. for Set	
	82D40-2	82D63-5
Cylinder	8PW-016-1	8PW-067-1
Integrated sensing system C9 Connector plug M12x1	8EA-024-2	8EA-024-2

84A40, 84A50

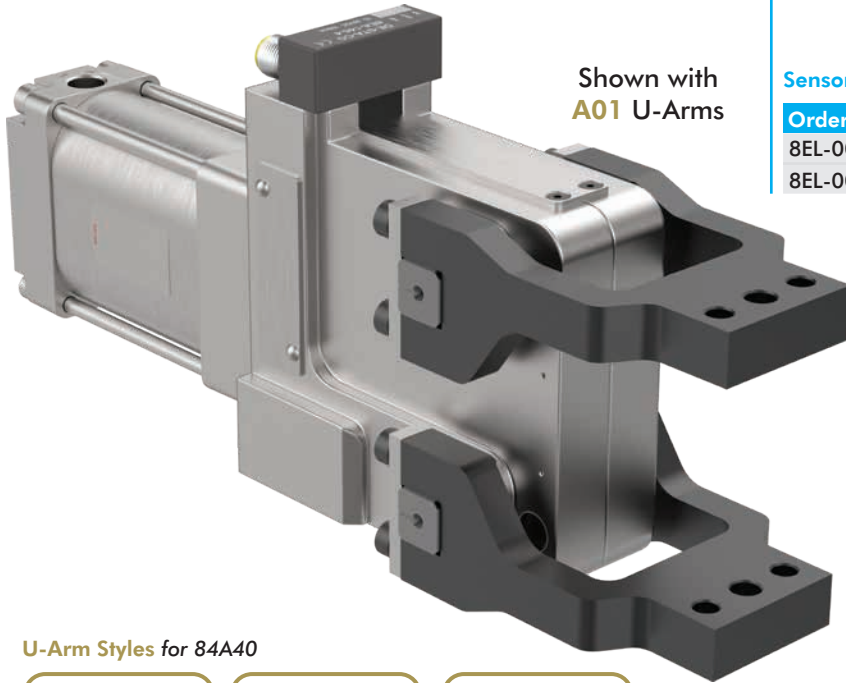
Enclosed Pneumatic Power Clamps | Dual Arm, Tolerance Compensation

CLICK OR SCAN
QR codes for
full catalog pages
on products



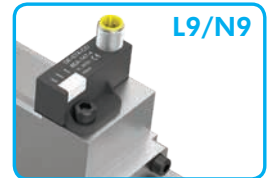
Size	Description
40-1	32 mm Cylinder (G1/8 Port)
50-1	50 mm Cylinder (G1/4 Port)

U-Arm Style	Description
000	Without Clamping Arms
A01	Double Tip, Surface Clamping
A02	Single Tip, Point Clamping
A03	Double Tip, Surface Clamping (Standard Profile 84A40, Wide Profile 84A50)
A04	Double Tip, Surface Clamping, Wide Profile for 84A50 only



Shown with
A01 U-Arms

Sensor	Description
00	Without Sensing System
L8	PNP Sensor with In-line M12x1 Connector (8EA-146-4-B)
N8	NPN Sensor with In-line M12x1 Connector (8EA-154-4-B)
L9	PNP Sensor with 90° M12x1 Connector (8EA-147-4-B)
N9	NPN Sensor with 90° M12x1 Connector (8EA-155-4-B)
K8	PNP Sensor with M12x1 Cable Connector (8EA-158-4-B)
K9	NPN Sensor with M12x1 Cable Connector (8EA-167-4-B)



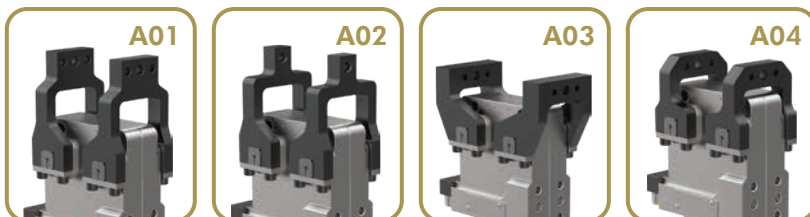
Sensor Cables Order separately

Order No.	Description
8EL-002-1	M12x1, Straight, 5-pin Connector w/5 m [16 ft.] Cable
8EL-003-1	M12x1, Angular, 4-pin Connector w/5 m [16 ft.] Cable

U-Arm Styles for 84A40



U-Arm Styles for 84A50



84A40-1

Max Holding/
Clamping Torque
29 Nm [21 ft-lb]
at 5 bar [72 psi]

84A50-1

Max Holding/
Clamping Torque
136 Nm [100 ft-lb]
at 5 bar [72 psi]